

Anti-CSX1/NKX2-5 antibody (Internal) (STJ71934)

STJ71934

GENERAL INFORMATION

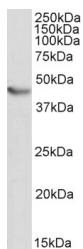
Product Type	Primary antibodies
Short Description	Goat polyclonal antibody anti-CSX1/NKX2-5 (Internal) is suitable for use in ELISA, Western Blot and Immunohistochemistry research applications.
Applications	Pep-ELISA/WB/IHC
Host/Source	Goat
Reactivity	Human/Mouse/Rat/Cow/Dog

PRODUCT PROPERTIES

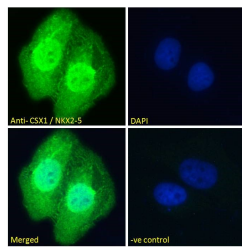
Clonality	Polyclonal
Clone ID	
Concentration	0.5 mg/mL
Conjugation	Unconjugated
Purification	Purified from goat serum by ammonium sulphate precipitation followed by antigen affinity chromatography using the immunizing peptide.
Dilution Range	Peptide ELISA: antibody detection limit dilution 1:32000. WB: Approx. 38kDa band observed in Mouse Heart lysates (calculated MW of 34.2kDa according to NP_032726.1). Recommended concentration: 1-3µg/ml. Primary incubation 1 hour at room temperature
Formulation	0.5 mg/ml in Tris saline, 0.02% sodium azide, pH7.3 with 0.5% bovine serum albumin. NA
Isotype	IgG
Storage Instruction	Store at -20°C on receipt and minimise freeze-thaw cycles.

TARGET INFORMATION

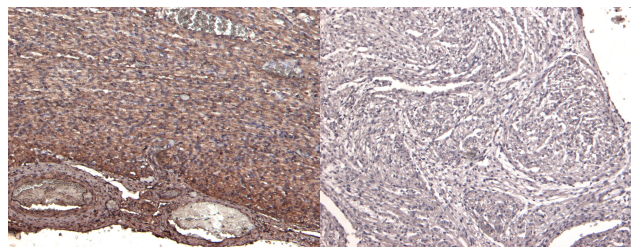
Gene ID	1482
Gene Symbol	NKX2-5
Uniprot ID	NKX25_HUMAN
Immunogen	
Immunogen Region	Internal
Specificity	This antibody is expected to recognize all three reported isoforms (NP_004378.1; NP_001159647.1; NP_001159648.1).
Immunogen Sequence	PRAYSDPDPKADPR



STJ71934 (0.3µg/ml) staining of Mouse Heart lysate (35µg protein in RIPA buffer). Detected by chemiluminescence.



STJ71934 Immunofluorescence analysis of paraformaldehyde fixed U2OS cells, permeabilized with 0.15% Triton. Primary incubation 1hr (10µg/ml) followed by Alexa Fluor 488 secondary antibody (2µg/ml), showing nuclear and cytoplasmic staining. The nuclear stain is DAPI (blue). NA NA Negative control: Unimmunized goat IgG (10µg/ml) followed by Alexa Fluor 488 secondary antibody (2µg/ml).



STJ71934 (4µg/ml) staining of paraffin embedded Human Heart. Heat induced antigen retrieval with citrate buffer pH 6, HRP-staining.

STJ71934 Negative Control showing staining of paraffin embedded Human Heart, with no primary antibody.

This product is suitable for in-vitro studies under the RESEARCH USE ONLY [RUO] licence. This product must not be used as for diagnostic or other medical purposes.
St John's Laboratory Ltd, Knowledge Dock Business Centre, University Way, London, E16 2RD | Tel: 0208 223 3081