

## Anti-CAMK2A antibody (Internal) (STJ71922)

STJ71922

### GENERAL INFORMATION

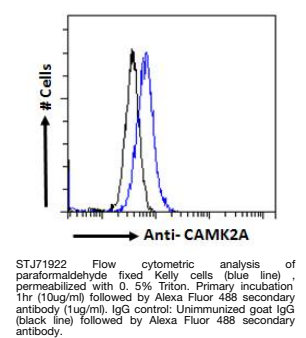
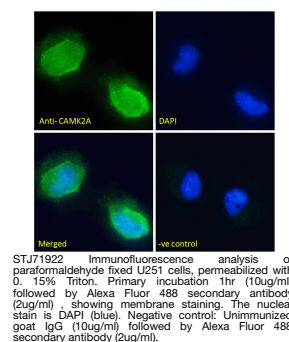
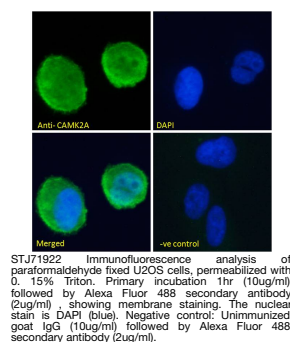
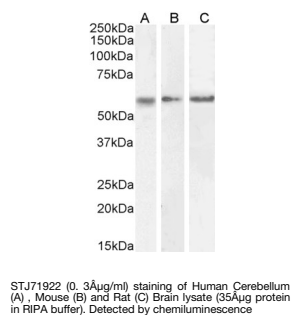
<b>Product Type</b>	Primary antibodies
<b>Short Description</b>	Goat polyclonal antibody anti-CAMK2A (Internal) is suitable for use in ELISA, Western Blot, Immunofluorescence and Flow Cytometry research applications.
<b>Applications</b>	Pep-ELISA/WB/IF/FC
<b>Host/Source</b>	Goat
<b>Reactivity</b>	Human/Mouse/Rat

### PRODUCT PROPERTIES

<b>Clonality</b>	Polyclonal
<b>Clone ID</b>	
<b>Concentration</b>	0.5 mg/mL
<b>Conjugation</b>	Unconjugated
<b>Purification</b>	Purified from goat serum by ammonium sulphate precipitation followed by antigen affinity chromatography using the immunizing peptide.
<b>Dilution Range</b>	Peptide ELISA: antibody detection limit dilution 1:128000. WB: Approx 48-50+60kDa bands observed in Human Cerebral Cortex and Mouse and Rat Brain lysates, corresponding to CAMK2alpha and CAMK2beta respectively and approx. 60kDa in Human Cerebellu
<b>Formulation</b>	0.5 mg/ml in Tris saline, 0.02% sodium azide, pH7.3 with 0.5% bovine serum albumin. NA
<b>Isotype</b>	IgG
<b>Storage Instruction</b>	Store at -20°C on receipt and minimise freeze-thaw cycles.

### TARGET INFORMATION

<b>Gene ID</b>	815
<b>Gene Symbol</b>	CAMK2A
<b>Uniprot ID</b>	KCC2A_HUMAN
<b>Immunogen</b>	
<b>Immunogen Region</b>	Internal
<b>Specificity</b>	This antibody is expected to recognize both reported isoforms (NP_057065.2; NP_741960.1).
<b>Immunogen Sequence</b>	PRTAQSEETRWWHR



This product is suitable for in-vitro studies under the RESEARCH USE ONLY [RUO] licence. This product must not be used as for diagnostic or other medical purposes.  
St John's Laboratory Ltd, Knowledge Dock Business Centre, University Way, London, E16 2RD | Tel: 0208 223 3081