

## Anti-Klk6/neurosin-Mouse antibody (C-Term) (STJ71898)

STJ71898

### GENERAL INFORMATION

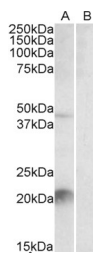
<b>Product Type</b>	Primary antibodies
<b>Short Description</b>	Goat polyclonal antibody anti-Klk6/neurosin-Mouse (C-Term) is suitable for use in ELISA and Western Blot research applications.
<b>Applications</b>	Pep-ELISA/WB
<b>Host/Source</b>	Goat
<b>Reactivity</b>	Mouse/Rat/Cow

### PRODUCT PROPERTIES

<b>Clonality</b>	Polyclonal
<b>Clone ID</b>	
<b>Concentration</b>	0.5 mg/mL
<b>Conjugation</b>	Unconjugated
<b>Purification</b>	Purified from goat serum by ammonium sulphate precipitation followed by antigen affinity chromatography using the immunizing peptide.
<b>Dilution Range</b>	Peptide ELISA: antibody detection limit dilution 1:16000. WB: Approx 22kDa band observed in Mouse Liver lysates (calculated MW of 27.5kDa according to NP_035307.1). Recommended concentration: 1-3µg/ml. An additional band of unknown identity was a 0.5 mg/ml in Tris saline, 0.02% sodium azide, pH7.3 with 0.5% bovine serum albumin. NA
<b>Formulation</b>	0.5 mg/ml in Tris saline, 0.02% sodium azide, pH7.3 with 0.5% bovine serum albumin. NA
<b>Isotype</b>	IgG
<b>Storage Instruction</b>	Store at -20°C on receipt and minimise freeze-thaw cycles.

### TARGET INFORMATION

<b>Gene ID</b>	
<b>Gene Symbol</b>	
<b>Uniprot ID</b>	
<b>Immunogen</b>	
<b>Immunogen Region</b>	C-Term
<b>Specificity</b>	
<b>Immunogen Sequence</b>	KEKPGVYTDVCTHIR



STJ71898 staining (2µg/ml) of Mouse Liver lysate (35µg protein in RIPA buffer) with (B) and without (A) blocking with the immunising peptide. Primary incubation was 1 hour. Detected by chemiluminescence.

This product is suitable for in-vitro studies under the RESEARCH USE ONLY [RUO] licence. This product must not be used as for diagnostic or other medical purposes.  
St John's Laboratory Ltd, Knowledge Dock Business Centre, University Way, London, E16 2RD | Tel: 0208 223 3081