

Anti-Connexin 43/GJA1 antibody (Internal) (STJ71895)

STJ71895

GENERAL INFORMATION

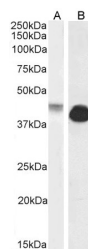
Product Type	Primary antibodies
Short Description	Goat polyclonal antibody anti-Connexin 43/GJA1 (Internal) is suitable for use in ELISA, Western Blot, Immunofluorescence and Flow Cytometry research applications.
Applications	Pep-ELISA/WB/IF/FC
Host/Source	Goat
Reactivity	Human/Rat/Dog

PRODUCT PROPERTIES

Clonality	Polyclonal
Clone ID	
Concentration	0.5 mg/mL
Conjugation	Unconjugated
Purification	Purified from goat serum by ammonium sulphate precipitation followed by antigen affinity chromatography using the immunizing peptide.
Dilution Range	Peptide ELISA: antibody detection limit dilution 1:32000. WB: Approx. 40kDa band observed in Human Cerebellum lysates (calculated MW of 43.0kDa according to NP_000156.1). Recommended concentration: 0.1-0.3µg/ml. Primary incubation 1 hour at room
Formulation	0.5 mg/ml in Tris saline, 0.02% sodium azide, pH7.3 with 0.5% bovine serum albumin. NA
Isotype	IgG
Storage Instruction	Store at -20°C on receipt and minimise freeze-thaw cycles.

TARGET INFORMATION

Gene ID	2697
Gene Symbol	GJA1
Uniprot ID	CXA1_HUMAN
Immunogen	
Immunogen Region	Internal
Specificity	
Immunogen Sequence	QPFDFPDDNQNSKK



STJ71895 (0.1 µg/ml) staining of Human (A) and (1 µg/ml) Rat (B) Heart lysate (35 µg protein in RIPA buffer). Detected by chemiluminescence.