

Anti-DLL1 antibody (Internal) (STJ71886)

STJ71886

GENERAL INFORMATION

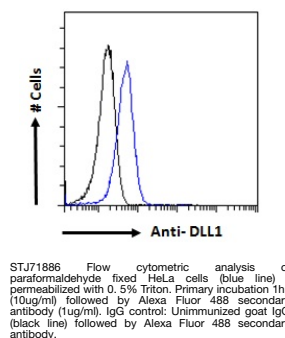
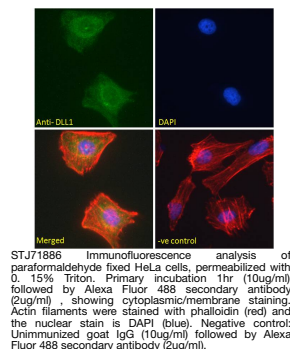
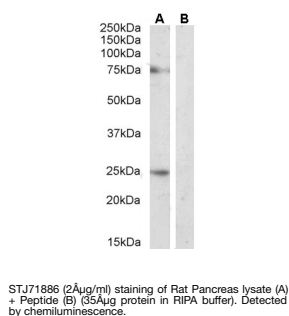
Product Type	Primary antibodies
Short Description	Goat polyclonal antibody anti-DLL1 (Internal) is suitable for use in ELISA, Western Blot, Immunofluorescence and Flow Cytometry research applications.
Applications	Pep-ELISA/WB/IF/FC
Host/Source	Goat
Reactivity	Human/Mouse/Rat

PRODUCT PROPERTIES

Clonality	Polyclonal
Clone ID	
Concentration	0.5 mg/mL
Conjugation	Unconjugated
Purification	Purified from goat serum by ammonium sulphate precipitation followed by antigen affinity chromatography using the immunizing peptide.
Dilution Range	Peptide ELISA: antibody detection limit dilution 1:16000. WB: Approx 75kDa band observed in Mouse Heart and Rat Pancreas lysates (calculated MW of 78.5kDa according to Mouse NP_031891.2 and 77.4kDa according to Rat NP_114452.1). An additional band
Formulation	0.5 mg/ml in Tris saline, 0.02% sodium azide, pH7.3 with 0.5% bovine serum albumin. NA
Isotype	IgG
Storage Instruction	Store at -20°C on receipt and minimise freeze-thaw cycles.

TARGET INFORMATION

Gene ID	28514
Gene Symbol	DLL1
Uniprot ID	DLL1_HUMAN
Immunogen	
Immunogen Region	Internal
Specificity	
Immunogen Sequence	ATQRLHTVGEEWSQD



This product is suitable for in-vitro studies under the RESEARCH USE ONLY [RUO] licence. This product must not be used as for diagnostic or other medical purposes.
St John's Laboratory Ltd, Knowledge Dock Business Centre, University Way, London, E16 2RD | Tel: 0208 223 3081