

Anti-F2R/PAR1 antibody (Internal) (STJ71882)

STJ71882

GENERAL INFORMATION

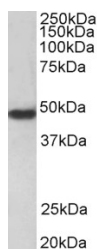
Product Type	Primary antibodies
Short Description	Goat polyclonal antibody anti-F2R/PAR1 (Internal) is suitable for use in ELISA and Western Blot research applications.
Applications	Pep-ELISA/WB
Host/Source	Goat
Reactivity	Human

PRODUCT PROPERTIES

Clonality	Polyclonal
Clone ID	
Concentration	0.5 mg/mL
Conjugation	Unconjugated
Purification	Purified from goat serum by ammonium sulphate precipitation followed by antigen affinity chromatography using the immunizing peptide.
Dilution Range	Peptide ELISA: antibody detection limit dilution 1:64000. WB: Approx 48kDa band observed in lysates of cell line HeLa (calculated MW of 47.4kDa according to NP_001983.2). Recommended concentration: 0.3-1µg/ml. Primary incubation 1 hour at room te
Formulation	0.5 mg/ml in Tris saline, 0.02% sodium azide, pH7.3 with 0.5% bovine serum albumin. NA
Isotype	IgG
Storage Instruction	Store at -20°C on receipt and minimise freeze-thaw cycles.

TARGET INFORMATION

Gene ID	2149
Gene Symbol	F2R
Uniprot ID	PAR1_HUMAN
Immunogen	
Immunogen Region	Internal
Specificity	
Immunogen Sequence	TRARRPESKATNAT



STJ71882 (0.3µg/ml) staining of HeLa cell lysate (35µg protein in RIPA buffer). Detected by chemiluminescence.