

Anti-CLEC16A antibody (1040-53) (STJ71857)

STJ71857

GENERAL INFORMATION

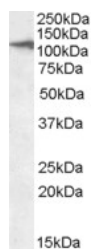
Product Type	Primary antibodies
Short Description	Goat polyclonal antibody anti-CLEC16A (1040-53) is suitable for use in ELISA and Western Blot research applications.
Applications	Pep-ELISA/WB
Host/Source	Goat
Reactivity	Human

PRODUCT PROPERTIES

Clonality	Polyclonal
Clone ID	
Concentration	0.5 mg/mL
Conjugation	Unconjugated
Purification	Purified from goat serum by ammonium sulphate precipitation followed by antigen affinity chromatography using the immunizing peptide.
Dilution Range	Peptide ELISA: antibody detection limit dilution 1:1000. WB: Approx. 110kDa band observed in Human Kidney and Liver lysates (calculated MW of 118kDa according to NP_056041.1). Recommended concentration: 1-3µg/mL.
Formulation	0.5 mg/mL in Tris saline, 0.02% sodium azide, pH7.3 with 0.5% bovine serum albumin. NA
Isotype	IgG
Storage Instruction	Store at -20°C on receipt and minimise freeze-thaw cycles.

TARGET INFORMATION

Gene ID	23274
Gene Symbol	CLEC16A
Uniprot ID	CL16A_HUMAN
Immunogen	
Immunogen Region	1040-53
Specificity	
Immunogen Sequence	EEAACAEPLVGTAE



STJ71857 (2µg/ml) staining of Human Liver lysate (35µg protein in RIPA buffer). Primary incubation was 1 hour. Detected by chemiluminescence.