

Anti-EVL antibody (Internal) (STJ71813)

STJ71813

GENERAL INFORMATION

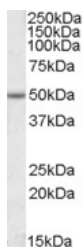
Product Type	Primary antibodies
Short Description	Goat polyclonal antibody anti-EVL (Internal) is suitable for use in ELISA and Western Blot research applications.
Applications	Pep-ELISA/WB
Host/Source	Goat
Reactivity	Human/Mouse/Rat

PRODUCT PROPERTIES

Clonality	Polyclonal
Clone ID	
Concentration	0.5 mg/mL
Conjugation	Unconjugated
Purification	Purified from goat serum by ammonium sulphate precipitation followed by antigen affinity chromatography using the immunizing peptide.
Dilution Range	Peptide ELISA: antibody detection limit dilution 1:8000. WB: Approx. 50kDa band observed in lysates of cell line Jurkat (calculated MW of 44.8kDa according to NP_057421.1). Recommended concentration: 1-3µg/ml.
Formulation	0.5 mg/ml in Tris saline, 0.02% sodium azide, pH7.3 with 0.5% bovine serum albumin. NA
Isotype	IgG
Storage Instruction	Store at -20°C on receipt and minimise freeze-thaw cycles.

TARGET INFORMATION

Gene ID	51466
Gene Symbol	EVL
Uniprot ID	EVL_HUMAN
Immunogen	
Immunogen Region	Internal
Specificity	
Immunogen Sequence	SQPPNSSEAGRKP



STJ71813 (1µg/ml) staining of Jurkat lysate (35µg protein in RIPA buffer). Primary incubation was 1 hour. Detected by chemiluminescence.

This product is suitable for in-vitro studies under the RESEARCH USE ONLY [RUO] licence. This product must not be used as for diagnostic or other medical purposes.
St John's Laboratory Ltd, Knowledge Dock Business Centre, University Way, London, E16 2RD | Tel: 0208 223 3081