

## Anti-Palladin antibody (895-907) (STJ71784)

STJ71784

### GENERAL INFORMATION

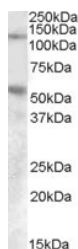
<b>Product Type</b>	Primary antibodies
<b>Short Description</b>	Goat polyclonal antibody anti-Palladin (895-907) is suitable for use in ELISA and Western Blot research applications.
<b>Applications</b>	Pep-ELISA/WB
<b>Host/Source</b>	Goat
<b>Reactivity</b>	Human/Mouse/Rat/Dog

### PRODUCT PROPERTIES

<b>Clonality</b>	Polyclonal
<b>Clone ID</b>	
<b>Concentration</b>	0.5 mg/mL
<b>Conjugation</b>	Unconjugated
<b>Purification</b>	Purified from goat serum by ammonium sulphate precipitation followed by antigen affinity chromatography using the immunizing peptide.
<b>Dilution Range</b>	Peptide ELISA: antibody detection limit dilution 1:2000. WB: Approx. 125kDa band observed in Human Umbilical Cord lysates (calculated MW of 122kDa according to NP_057165.3). Recommended concentration: 0.1-0.3µg/ml. An additional band of 55kDa was observed.
<b>Formulation</b>	0.5 mg/ml in Tris saline, 0.02% sodium azide, pH7.3 with 0.5% bovine serum albumin. NA
<b>Isotype</b>	IgG
<b>Storage Instruction</b>	Store at -20°C on receipt and minimise freeze-thaw cycles.

### TARGET INFORMATION

<b>Gene ID</b>	<a href="#">23022</a>
<b>Gene Symbol</b>	<a href="#">PALLD</a>
<b>Uniprot ID</b>	<a href="#">PALLD_HUMAN</a>
<b>Immunogen</b>	
<b>Immunogen Region</b>	895-907
<b>Specificity</b>	
<b>Immunogen Sequence</b>	RDSGDENEPIQER



STJ71784 (0.1µg/ml) staining of Human Umbilical Cord lysate (35µg protein in RIPA buffer) with (B) and without (A) blocking with the immunising peptide. Primary incubation was 1 hour. Detected by chemiluminescence.