

Anti-SIGLEC8 antibody (Internal) (STJ71771)

STJ71771

GENERAL INFORMATION

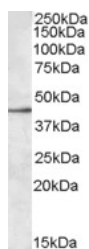
Product Type	Primary antibodies
Short Description	Goat polyclonal antibody anti-SIGLEC8 (Internal) is suitable for use in ELISA and Western Blot research applications.
Applications	Pep-ELISA/WB
Host/Source	Goat
Reactivity	Human

PRODUCT PROPERTIES

Clonality	Polyclonal
Clone ID	
Concentration	0.5 mg/mL
Conjugation	Unconjugated
Purification	Purified from goat serum by ammonium sulphate precipitation followed by antigen affinity chromatography using the immunizing peptide.
Dilution Range	Peptide ELISA: antibody detection limit dilution 1:32000. WB: Approx. 45kDa band observed in lysates of cell line MOLT4 (calculated MW of 54.0kDa according to NP_055257.2). The observed molecular weight corresponds to earlier findings in literature
Formulation	0.5 mg/ml in Tris saline, 0.02% sodium azide, pH7.3 with 0.5% bovine serum albumin. NA
Isotype	IgG
Storage Instruction	Store at -20°C on receipt and minimise freeze-thaw cycles.

TARGET INFORMATION

Gene ID	27181
Gene Symbol	SIGLEC8
Uniprot ID	SIGL8_HUMAN
Immunogen	
Immunogen Region	Internal
Specificity	
Immunogen Sequence	SYKSQLNYKTKQ



STJ71771 (0.3 µg/ml) staining of MOLT4 lysate (35 µg protein in RIPA buffer). Primary incubation was 1 hour. Detected by chemiluminescence.