

Anti-ERP29 antibody (C-Term) (STJ71752)

STJ71752

GENERAL INFORMATION

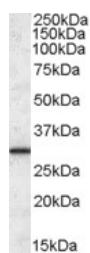
Product Type	Primary antibodies
Short Description	Goat polyclonal antibody anti-ERP29 (C-Term) is suitable for use in ELISA, Western Blot and Immunofluorescence research applications.
Applications	Pep-ELISA/WB/IF
Host/Source	Goat
Reactivity	Human/Rat/Dog/Pig/Cow

PRODUCT PROPERTIES

Clonality	Polyclonal
Clone ID	
Concentration	0.5 mg/mL
Conjugation	Unconjugated
Purification	Purified from goat serum by ammonium sulphate precipitation followed by antigen affinity chromatography using the immunizing peptide.
Dilution Range	Peptide ELISA: antibody detection limit dilution 1:2000. WB: Approx. 28kDa band observed in Human Liver lysates (calculated MW of 29.0kDa according to NP_006808.1). Recommended concentration: 0.1-0.3µg/ml. Primary incubation was 1 hour. This prod 0.5 mg/ml in Tris saline, 0.02% sodium azide, pH7.3 with 0.5% bovine serum albumin. NA
Formulation	
Isotype	IgG
Storage Instruction	Store at -20°C on receipt and minimise freeze-thaw cycles.

TARGET INFORMATION

Gene ID	10961
Gene Symbol	ERP29
Uniprot ID	ERP29_HUMAN
Immunogen	
Immunogen Region	C-Term
Specificity	This antibody is expected to recognize isoform 1 (NP_006808.1) only.
Immunogen Sequence	EKNKMSDGKKEELQ



STJ71752 (0.1 µg/ml) staining of Human Liver lysate (35 µg protein in RIPA buffer). Detected by chemiluminescence.

This product is suitable for in-vitro studies under the RESEARCH USE ONLY [RUO] licence. This product must not be used as for diagnostic or other medical purposes.
St John's Laboratory Ltd, Knowledge Dock Business Centre, University Way, London, E16 2RD | Tel: 0208 223 3081