

Anti-DPM3 antibody (Internal) (STJ71741)

STJ71741

GENERAL INFORMATION

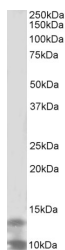
Product Type	Primary antibodies
Short Description	Goat polyclonal antibody anti-DPM3 (Internal) is suitable for use in ELISA and Western Blot research applications.
Applications	Pep-ELISA/WB
Host/Source	Goat
Reactivity	Human/Mouse/Rat/Dog/Cow/Pig

PRODUCT PROPERTIES

Clonality	Polyclonal
Clone ID	
Concentration	0.5 mg/mL
Conjugation	Unconjugated
Purification	Purified from goat serum by ammonium sulphate precipitation followed by antigen affinity chromatography using the immunizing peptide.
Dilution Range	Peptide ELISA: antibody detection limit dilution 1:1000. WB: Approx 10+13kDa bands observed in lysates of cell line K562 (calculated MW of 13.3kDa according to NP_061846.2 and 10.1kDa according to NP_714963.1). Recommended concentration: 1-3µg/ml
Formulation	0.5 mg/ml in Tris saline, 0.02% sodium azide, pH7.3 with 0.5% bovine serum albumin. NA
Isotype	IgG
Storage Instruction	Store at -20°C on receipt and minimise freeze-thaw cycles.

TARGET INFORMATION

Gene ID	54344
Gene Symbol	DPM3
Uniprot ID	DPM3_HUMAN
Immunogen	
Immunogen Region	Internal
Specificity	This antibody is expected to recognize both reported isoforms (NP_061846.2 and NP_714963.1).
Immunogen Sequence	HDCEDAARELQSQ



STJ71741 (2µg/ml) staining of K562 lysate (35µg protein in RIPA buffer). Primary incubation was 1 hour. Detected by chemiluminescence.