

Anti-LIP1/LKB1P antibody (Internal) (STJ71682)

STJ71682

GENERAL INFORMATION

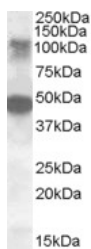
Product Type	Primary antibodies
Short Description	Goat polyclonal antibody anti-LIP1/LKB1P (Internal) is suitable for use in ELISA and Western Blot research applications.
Applications	Pep-ELISA/WB
Host/Source	Goat
Reactivity	Human

PRODUCT PROPERTIES

Clonality	Polyclonal
Clone ID	
Concentration	0.5 mg/mL
Conjugation	Unconjugated
Purification	Purified from goat serum by ammonium sulphate precipitation followed by antigen affinity chromatography using the immunizing peptide.
Dilution Range	Peptide ELISA: antibody detection limit dilution 1:64000. WB: Approx. 110 kDa band observed in Human Ovary lysates (calculated MW of 121 kDa according to NP_443134.2). Recommended concentration: 0.3-1µg/ml. An additional strong band of unknown ide
Formulation	0.5 mg/ml in Tris saline, 0.02% sodium azide, pH7.3 with 0.5% bovine serum albumin. NA
Isotype	IgG
Storage Instruction	Store at -20°C on receipt and minimise freeze-thaw cycles.

TARGET INFORMATION

Gene ID	114790
Gene Symbol	STK11IP
Uniprot ID	S11IP_HUMAN
Immunogen	
Immunogen Region	Internal
Specificity	
Immunogen Sequence	SRGTPNRRERKQGEQS



STJ71682 (0.5µg/ml) staining of Human Ovary lysate (35µg protein in RPA buffer). Primary incubation was 1 hour. Detected by chemiluminescence.