

Anti-Slc10a2-Mouse antibody (C-Term) (STJ71675)

STJ71675

GENERAL INFORMATION

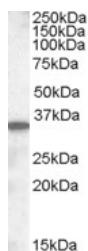
Product Type	Primary antibodies
Short Description	Goat polyclonal antibody anti-Slc10a2-Mouse (C-Term) is suitable for use in ELISA and Western Blot research applications.
Applications	Pep-ELISA/WB
Host/Source	Goat
Reactivity	Mouse

PRODUCT PROPERTIES

Clonality	Polyclonal
Clone ID	
Concentration	0.5 mg/mL
Conjugation	Unconjugated
Purification	Purified from goat serum by ammonium sulphate precipitation followed by antigen affinity chromatography using the immunizing peptide.
Dilution Range	Peptide ELISA: antibody detection limit dilution 1:8000. WB: Approx. 35kDa band observed in Mouse Liver lysates (calculated MW of 38.1kDa according to NP_035518.1). Recommended concentration: 0.1-0.3µg/mL. Primary incubation 1 hour at room temper
Formulation	0.5 mg/mL in Tris saline, 0.02% sodium azide, pH7.3 with 0.5% bovine serum albumin. NA
Isotype	IgG
Storage Instruction	Store at -20°C on receipt and minimise freeze-thaw cycles.

TARGET INFORMATION

Gene ID	
Gene Symbol	
Uniprot ID	
Immunogen	
Immunogen Region	C-Term
Specificity	
Immunogen Sequence	DETNGKFQPDEK



STJ71675 (0.5 µg/mL) staining of Mouse Small Intestine lysate (35 µg protein in RIPA buffer). Primary incubation was 1 hour. Detected by chemiluminescence.