

Anti-TRPC4 antibody (Internal) (STJ71665)

STJ71665

GENERAL INFORMATION

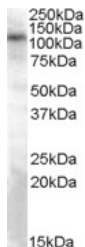
Product Type	Primary antibodies
Short Description	Goat polyclonal antibody anti-TRPC4 (Internal) is suitable for use in ELISA, Western Blot and Immunohistochemistry research applications.
Applications	Pep-ELISA/WB/IHC
Host/Source	Goat
Reactivity	Human/Mouse/Rat/Dog/Pig/Cow

PRODUCT PROPERTIES

Clonality	Polyclonal
Clone ID	
Concentration	0.5 mg/mL
Conjugation	Unconjugated
Purification	Purified from goat serum by ammonium sulphate precipitation followed by antigen affinity chromatography using the immunizing peptide.
Dilution Range	Peptide ELISA: antibody detection limit dilution 1:32000. WB: Approx. 110kDa band observed in Rat Brain lysates (calculated MW of 112kDa according to Human NP_057263.1 and to Rat NP_536321.1). Recommended concentration: 0.3-1µg/ml. Primary incuba
Formulation	0.5 mg/ml in Tris saline, 0.02% sodium azide, pH7.3 with 0.5% bovine serum albumin. NA
Isotype	IgG
Storage Instruction	Store at -20°C on receipt and minimise freeze-thaw cycles.

TARGET INFORMATION

Gene ID	7223
Gene Symbol	TRPC4
Uniprot ID	TRPC4_HUMAN
Immunogen	
Immunogen Region	Internal
Specificity	This antibody is expected to recognise all six reported isoforms (NP_057263.1; NP_003297.1; NP_001129427.1; NP_001129429.1; NP_001129428.1; NP_001129430.1).
Immunogen Sequence	KHAKEEDSSIDYD



STJ71665 (0.3µg/ml) staining of Rat Brain lysate (35µg protein in RIPA buffer). Detected by chemiluminescence.

This product is suitable for in-vitro studies under the RESEARCH USE ONLY [RUO] licence. This product must not be used as for diagnostic or other medical purposes.
St John's Laboratory Ltd, Knowledge Dock Business Centre, University Way, London, E16 2RD | Tel: 0208 223 3081