

Anti-Apolipoprotein F antibody (C-Term) (STJ71651)

STJ71651

GENERAL INFORMATION

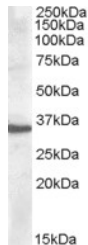
| | |
|--------------------------|--|
| Product Type | Primary antibodies |
| Short Description | Goat polyclonal antibody anti-Apolipoprotein F (C-Term) is suitable for use in ELISA, Western Blot and Immunohistochemistry research applications. |
| Applications | Pep-ELISA/WB/IHC |
| Host/Source | Goat |
| Reactivity | Human |

PRODUCT PROPERTIES

| | |
|-----------------------|---|
| Clonality | Polyclonal |
| Clone ID | |
| Concentration | 0.5 mg/mL |
| Conjugation | Unconjugated |
| Purification | Purified from goat serum by ammonium sulphate precipitation followed by antigen affinity chromatography using the immunizing peptide. |
| Dilution Range | Peptide ELISA: antibody detection limit dilution 1:32000. WB: Approx. 35kDa band observed in Human Liver lysates (calculated MW of 35.4kDa according to NP_001629.1). Recommended concentration: 0.3-1µg/ml. IHC: In paraffin embedded Human Liver |
| Formulation | 0.5 mg/ml in Tris saline, 0.02% sodium azide, pH7.3 with 0.5% bovine serum albumin. NA |
| Isotype | IgG |
| Storage | Store at -20°C on receipt and minimise freeze-thaw cycles. |
| Instruction | |

TARGET INFORMATION

| | |
|---------------------------|---------------|
| Gene ID | 319 |
| Gene Symbol | APOF |
| Uniprot ID | APOF_HUMAN |
| Immunogen | |
| Immunogen Region | C-Term |
| Specificity | |
| Immunogen Sequence | KSYDLDPGAGSLE |



STJ71651 (0.5µg/ml) staining of Human Liver lysate (35µg protein in RIPA buffer). Primary incubation was 1 hour. Detected by chemiluminescence.

This product is suitable for in-vitro studies under the RESEARCH USE ONLY [RUO] licence. This product must not be used as for diagnostic or other medical purposes.
St John's Laboratory Ltd, Knowledge Dock Business Centre, University Way, London, E16 2RD | Tel: 0208 223 3081