

Anti-CBX8 antibody (Internal) (STJ71650)

STJ71650

GENERAL INFORMATION

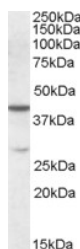
Product Type	Primary antibodies
Short Description	Goat polyclonal antibody anti-CBX8 (Internal) is suitable for use in ELISA and Western Blot research applications.
Applications	Pep-ELISA/WB
Host/Source	Goat
Reactivity	Human/Mouse/Rat/Pig/Cow

PRODUCT PROPERTIES

Clonality	Polyclonal
Clone ID	
Concentration	0.5 mg/mL
Conjugation	Unconjugated
Purification	Purified from goat serum by ammonium sulphate precipitation followed by antigen affinity chromatography using the immunizing peptide.
Dilution Range	Peptide ELISA: antibody detection limit dilution 1:32000. WB: Approx. 40kDa band observed in lysates of cell line K562 (calculated MW of 43.4kDa according to NP_065700.1). Recommended concentration: 0.1-0.3µg/mL. An additional band of unknown iden
Formulation	0.5 mg/ml in Tris saline, 0.02% sodium azide, pH7.3 with 0.5% bovine serum albumin. NA
Isotype	IgG
Storage Instruction	Store at -20°C on receipt and minimise freeze-thaw cycles.

TARGET INFORMATION

Gene ID	57332
Gene Symbol	CBX8
Uniprot ID	CBX8_HUMAN
Immunogen	
Immunogen Region	Internal
Specificity	
Immunogen Sequence	RERGTSRVDDKPSS



STJ71650 (0.1 µg/ml) staining of K562 lysate (35 µg protein in RIPA buffer). Primary incubation was 1 hour. Detected by chemiluminescence.