

Anti-ABCD3 antibody (Internal) (STJ71633)

STJ71633

GENERAL INFORMATION

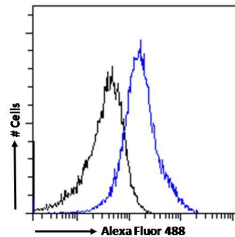
Product Type	Primary antibodies
Short Description	Goat polyclonal antibody anti-ABCD3 (Internal) is suitable for use in ELISA, Flow Cytometry and Immunohistochemistry research applications.
Applications	Pep-ELISA/FC/IHC
Host/Source	Goat
Reactivity	Human/Mouse/Rat

PRODUCT PROPERTIES

Clonality	Polyclonal
Clone ID	
Concentration	0.5 mg/mL
Conjugation	Unconjugated
Purification	Purified from goat serum by ammonium sulphate precipitation followed by antigen affinity chromatography using the immunizing peptide.
Dilution Range	Peptide ELISA: antibody detection limit dilution 1:16000. IHC: In paraffin embedded Human Testis shows vesicular staining in Sertoli cells. Recommended concentration: 2.5-3.8µg/ml. FC: Flow cytometric analysis of A431 cells. Recommended concn 0.5 mg/ml in Tris saline, 0.02% sodium azide, pH7.3 with 0.5% bovine serum albumin. NA
Formulation	0.5 mg/ml in Tris saline, 0.02% sodium azide, pH7.3 with 0.5% bovine serum albumin. NA
Isotype	IgG
Storage Instruction	Store at -20°C on receipt and minimise freeze-thaw cycles.

TARGET INFORMATION

Gene ID	5825
Gene Symbol	ABCD3
Uniprot ID	ABCD3_HUMAN
Immunogen	
Immunogen Region	Internal
Specificity	This antibody is expected to recognize one isoform (NP_002849.1) only.
Immunogen Sequence	PDGREDQKRKGISD



STJ71633 Flow cytometric analysis of paraformaldehyde fixed A431 cells (blue line), permeabilized with 0.5% Triton. Primary incubation 1hr (10µg/ml) followed by Alexa Fluor 488 secondary antibody (1µg/ml). IgG control: Unimmunized goat IgG (black line) followed by Alexa Fluor 488 secondary antibody.

This product is suitable for in-vitro studies under the RESEARCH USE ONLY [RUO] licence. This product must not be used as for diagnostic or other medical purposes.
St John's Laboratory Ltd, Knowledge Dock Business Centre, University Way, London, E16 2RD | Tel: 0208 223 3081