

## Anti-Pnpla3/Adiponutrin-Mouse antibody (Internal) (STJ71499)

STJ71499

### GENERAL INFORMATION

<b>Product Type</b>	Primary antibodies
<b>Short Description</b>	Goat polyclonal antibody anti-Pnpla3/Adiponutrin-Mouse (Internal) is suitable for use in ELISA, Western Blot and Immunohistochemistry research applications.
<b>Applications</b>	Pep-ELISA/WB/IHC
<b>Host/Source</b>	Goat
<b>Reactivity</b>	Human/Mouse/Rat

### PRODUCT PROPERTIES

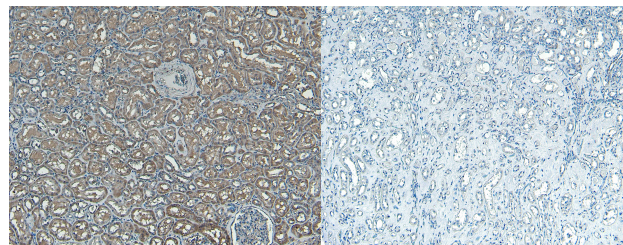
<b>Clonality</b>	Polyclonal
<b>Clone ID</b>	
<b>Concentration</b>	0.5 mg/mL
<b>Conjugation</b>	Unconjugated
<b>Purification</b>	Purified from goat serum by ammonium sulphate precipitation followed by antigen affinity chromatography using the immunizing peptide.
<b>Dilution Range</b>	Peptide ELISA: antibody detection limit dilution 1:16000. WB: Approx 45kDa band observed in Mouse Adrenal Gland lysates, and also in preliminary testing of Mouse and Human Kidney and Rat Adrenal Gland lysate (calculated MW of 42.6Da according to
<b>Formulation</b>	0.5 mg/ml in Tris saline, 0.02% sodium azide, pH7.3 with 0.5% bovine serum albumin. NA
<b>Isotype</b>	IgG
<b>Storage Instruction</b>	Store at -20°C on receipt and minimise freeze-thaw cycles.

### TARGET INFORMATION

<b>Gene ID</b>	80339
<b>Gene Symbol</b>	PNPLA3
<b>Uniprot ID</b>	PLPL3_HUMAN
<b>Immunogen</b>	Internal
<b>Region</b>	
<b>Specificity</b>	This antibody is raised against a peptide derived from the Mouse protein sequence and this peptide differs from Human only in position 2.
<b>Immunogen Sequence</b>	EHDICPKVKSTN

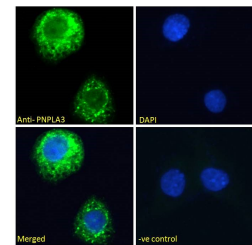


STJ71499 (0.03 µg/ml) staining of Mouse Adrenal Gland lysate (35 µg protein in RIPA buffer). Detected by chemiluminescence.



STJ71499 (8 µg/ml) staining of paraffin-embedded Human Kidney. Heat induced antigen retrieval with citrate buffer pH 6, HRP-staining.

STJ71499 Negative Control showing staining of paraffin-embedded Human Kidney, with no primary antibody.



STJ71499 Immunofluorescence analysis of paraformaldehyde fixed HepG2 cells, permeabilized with 0.15% Triton. Primary incubation 1hr (10 µg/ml) followed by Alexa Fluor 488 secondary antibody (2 µg/ml), showing Mitochondrial staining. The nuclear stain is DAPI (blue). NA NA Negative control: Unimmunized goat IgG (10 µg/ml) followed by Alexa Fluor 488 secondary antibody (2 µg/ml). This data is from a previous batch, not on sale.

This product is suitable for in-vitro studies under the RESEARCH USE ONLY [RUO] licence. This product must not be used as for diagnostic or other medical purposes.  
St John's Laboratory Ltd, Knowledge Dock Business Centre, University Way, London, E16 2RD | Tel: 0208 223 3081