

## Anti-MARCH10 antibody (Internal) (STJ71404)

STJ71404

### GENERAL INFORMATION

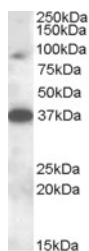
<b>Product Type</b>	Primary antibodies
<b>Short Description</b>	Goat polyclonal antibody anti-MARCH10 (Internal) is suitable for use in ELISA, Western Blot and Immunohistochemistry research applications.
<b>Applications</b>	Pep-ELISA/WB/IHC
<b>Host/Source</b>	Goat
<b>Reactivity</b>	Human/Rat/Cow

### PRODUCT PROPERTIES

<b>Clonality</b>	Polyclonal
<b>Clone ID</b>	
<b>Concentration</b>	0.5 mg/mL
<b>Conjugation</b>	Unconjugated
<b>Purification</b>	Purified from goat serum by ammonium sulphate precipitation followed by antigen affinity chromatography using the immunizing peptide.
<b>Dilution Range</b>	Peptide ELISA: antibody detection limit dilution 1:8000. WB: Approx. 90 kDa band observed in Rat Testis lysates (calculated MW of 90.5 kDa according to Human NP_689811.2 and of 87.9 kDa according to Mouse NP_766156.2). Recommended concentration: 0.5 mg/ml in Tris saline, 0.02% sodium azide, pH7.3 with 0.5% bovine serum albumin. NA
<b>Formulation</b>	
<b>Isotype</b>	IgG
<b>Storage Instruction</b>	Store at -20°C on receipt and minimise freeze-thaw cycles.

### TARGET INFORMATION

<b>Gene ID</b>	<a href="#">162333</a>
<b>Gene Symbol</b>	<a href="#">MARCHF10</a>
<b>Uniprot ID</b>	<a href="#">MARHA_HUMAN</a>
<b>Immunogen</b>	
<b>Immunogen Region</b>	Internal
<b>Specificity</b>	This antibody is expected to recognise both reported isoforms (NP_001094345.1; NP_689811.2) , which are identical.
<b>Immunogen Sequence</b>	SRNYPQPRTEE



STJ71404 (0.3 µg/ml) staining of Rat Testis lysate (35 µg protein in RIPA buffer). Detected by chemiluminescence.