

Anti-TAS1R2/GPR71 antibody (Internal) (STJ71396)

STJ71396

GENERAL INFORMATION

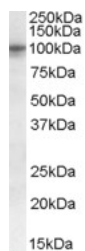
Product Type	Primary antibodies
Short Description	Goat polyclonal antibody anti-TAS1R2/GPR71 (Internal) is suitable for use in ELISA and Western Blot research applications.
Applications	Pep-ELISA/WB
Host/Source	Goat
Reactivity	Human

PRODUCT PROPERTIES

Clonality	Polyclonal
Clone ID	
Concentration	0.5 mg/mL
Conjugation	Unconjugated
Purification	Purified from goat serum by ammonium sulphate precipitation followed by antigen affinity chromatography using the immunizing peptide.
Dilution Range	Peptide ELISA: antibody detection limit dilution 1:32000. WB: Approx 100kDa band observed in Human Pancreas lysates (calculated MW of 95.2kDa according to NP_689418.2). Recommended concentration: 1-3µg/mL. Primary incubation was 1 hour.
Formulation	0.5 mg/mL in Tris saline, 0.02% sodium azide, pH7.3 with 0.5% bovine serum albumin. NA
Isotype	IgG
Storage Instruction	Store at -20°C on receipt and minimise freeze-thaw cycles.

TARGET INFORMATION

Gene ID	80834
Gene Symbol	TAS1R2
Uniprot ID	TS1R2_HUMAN
Immunogen	
Immunogen Region	Internal
Specificity	
Immunogen Sequence	CSKRCQSGQKKKP



STJ71396 (0.3µg/mL) staining of Human Pancreas lysate (35µg protein in RIPA buffer). Detected by chemiluminescence.

This product is suitable for in-vitro studies under the RESEARCH USE ONLY [RUO] licence. This product must not be used as for diagnostic or other medical purposes.
St John's Laboratory Ltd, Knowledge Dock Business Centre, University Way, London, E16 2RD | Tel: 0208 223 3081