

Anti-GOT1 antibody (157-167) (STJ71389)

STJ71389

GENERAL INFORMATION

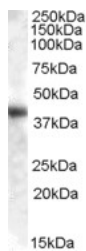
| | |
|--------------------------|---|
| Product Type | Primary antibodies |
| Short Description | Goat polyclonal antibody anti-GOT1 (157-167) is suitable for use in ELISA, Western Blot and Immunohistochemistry research applications. |
| Applications | Pep-ELISA/WB/IHC |
| Host/Source | Goat |
| Reactivity | Human/Rat |

PRODUCT PROPERTIES

| | |
|----------------------------|---|
| Clonality | Polyclonal |
| Clone ID | |
| Concentration | 0.5 mg/mL |
| Conjugation | Unconjugated |
| Purification | Purified from goat serum by ammonium sulphate precipitation followed by antigen affinity chromatography using the immunizing peptide. |
| Dilution Range | Peptide ELISA: antibody detection limit dilution 1:4000. WB: Approx 40kDa band observed in Human Brain (Cerebellum) , Liver and Skeletal Muscle lysates (calculated MW of 46.2kDa according to NP_002070.1). The observed molecular weight corresponds |
| Formulation | 0.5 mg/ml in Tris saline, 0.02% sodium azide, pH7.3 with 0.5% bovine serum albumin. NA |
| Isotype | IgG |
| Storage Instruction | Store at -20°C on receipt and minimise freeze-thaw cycles. |

TARGET INFORMATION

| | |
|---------------------------|-------------|
| Gene ID | 2805 |
| Gene Symbol | GOT1 |
| Uniprot ID | AATC_HUMAN |
| Immunogen | |
| Immunogen Region | 157-167 |
| Specificity | |
| Immunogen Sequence | RSYRYWDAEKR |



STJ71389 (0.01 µg/ml) staining of Human Liver lysate (35 µg protein in RIPA buffer). Primary incubation was 1 hour. Detected by chemiluminescence.

This product is suitable for in-vitro studies under the RESEARCH USE ONLY [RUO] licence. This product must not be used as for diagnostic or other medical purposes.
St John's Laboratory Ltd, Knowledge Dock Business Centre, University Way, London, E16 2RD | Tel: 0208 223 3081