

Anti-ABCB5 antibody (Internal) (STJ71387)

STJ71387

GENERAL INFORMATION

Product Type	Primary antibodies
Short Description	Goat polyclonal antibody anti-ABCB5 (Internal) is suitable for use in ELISA, Western Blot and Flow Cytometry research applications.
Applications	Pep-ELISA/WB/FC
Host/Source	Goat
Reactivity	Human

PRODUCT PROPERTIES

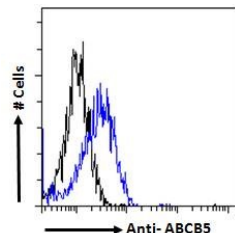
Clonality	Polyclonal
Clone ID	
Concentration	0.5 mg/mL
Conjugation	Unconjugated
Purification	Purified from goat serum by ammonium sulphate precipitation followed by antigen affinity chromatography using the immunizing peptide.
Dilution Range	Peptide ELISA: antibody detection limit dilution 1:32000. WB: Approx 80kDa band observed in lysates of cell line A431 (calculated MW of 89.8kDa according to NP_848654.3). Recommended concentration: 0.3-1µg/ml. Primary incubation was 1 hour. F
Formulation	0.5 mg/ml in Tris saline, 0.02% sodium azide, pH7.3 with 0.5% bovine serum albumin. NA
Isotype	IgG
Storage	Store at -20°C on receipt and minimise freeze-thaw cycles.
Instruction	

TARGET INFORMATION

Gene ID	340273
Gene Symbol	ABCB5
Uniprot ID	ABCB5_HUMAN
Immunogen	Internal
Region	
Specificity	This antibody is expected to recognise both reported isoforms (NP_848654.3; NP_001157413.1)
Immunogen Sequence	QTQHRNTSKKAQ



STJ71387 (0.3 µg/ml) staining of lysates of cell line A431 (35 µg protein in RIPA buffer). Detected by chemiluminescence.



Flow cytometric analysis of paraformaldehyde fixed HepG2 cells (blue line), permeabilized with 0.5% Triton. Primary incubation 1hr (10 µg/ml) followed by Alexa Fluor 488 secondary antibody (1 µg/ml). NA NA IgG control: Unimmunized goat IgG (black line) followed by Alexa Fluor 488 secondary antibody.

This product is suitable for in-vitro studies under the RESEARCH USE ONLY [RUO] licence. This product must not be used as for diagnostic or other medical purposes.
St John's Laboratory Ltd, Knowledge Dock Business Centre, University Way, London, E16 2RD | Tel: 0208 223 3081