

Anti-U2AF1L4 antibody (Internal) (STJ71363)

STJ71363

GENERAL INFORMATION

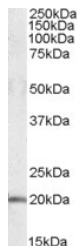
Product Type	Primary antibodies
Short Description	Goat polyclonal antibody anti-U2AF1L4 (Internal) is suitable for use in ELISA and Western Blot research applications.
Applications	Pep-ELISA/WB
Host/Source	Goat
Reactivity	Human/Mouse/Rat/Dog

PRODUCT PROPERTIES

Clonality	Polyclonal
Clone ID	
Concentration	0.5 mg/mL
Conjugation	Unconjugated
Purification	Purified from goat serum by ammonium sulphate precipitation followed by antigen affinity chromatography using the immunizing peptide.
Dilution Range	Peptide ELISA: antibody detection limit dilution 1:32000. WB: Approx. 20kDa band observed in Human Brain (Cerebellum) and Lung lysates (calculated MW of 21.3kDa according to NP_001035515.1). Recommended concentration: 0.1-0.3µg/ml.
Formulation	0.5 mg/ml in Tris saline, 0.02% sodium azide, pH7.3 with 0.5% bovine serum albumin. NA
Isotype	IgG
Storage Instruction	Store at -20°C on receipt and minimise freeze-thaw cycles.

TARGET INFORMATION

Gene ID	199746
Gene Symbol	U2AF1L4
Uniprot ID	U2AF4_HUMAN
Immunogen	
Immunogen Region	Internal
Specificity	This antibody is expected to recognise both reported isoforms (NP_001035515.1 and NP_659424.2). No cross-reactivity with U2AF1 expected.
Immunogen Sequence	EDGERAVALSNR



STJ71363 (0.1 µg/ml) staining of Human Cerebellum lysate (35 µg protein in RIPA buffer). Primary incubation was 1 hour. Detected by chemiluminescence.

This product is suitable for in-vitro studies under the RESEARCH USE ONLY [RUO] licence. This product must not be used as for diagnostic or other medical purposes.
St John's Laboratory Ltd, Knowledge Dock Business Centre, University Way, London, E16 2RD | Tel: 0208 223 3081