

Anti-Vitamin D-binding protein/GC antibody (Internal) (STJ71298)

STJ71298

GENERAL INFORMATION

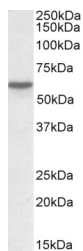
Product Type	Primary antibodies
Short Description	Goat polyclonal antibody anti-Vitamin D-binding protein/GC (Internal) is suitable for use in ELISA and Western Blot research applications.
Applications	Pep-ELISA/WB
Host/Source	Goat
Reactivity	Human

PRODUCT PROPERTIES

Clonality	Polyclonal
Clone ID	
Concentration	0.5 mg/mL
Conjugation	Unconjugated
Purification	Purified from goat serum by ammonium sulphate precipitation followed by antigen affinity chromatography using the immunizing peptide.
Dilution Range	Peptide ELISA: antibody detection limit dilution 1:2000. WB: Approx 56kDa band observed in Human Lung lysates (calculated MW of 52.9kDa according to NP_000574.2). The observed molecular weight corresponds to earlier findings in literature with di
Formulation	0.5 mg/ml in Tris saline, 0.02% sodium azide, pH7.3 with 0.5% bovine serum albumin. NA
Isotype	IgG
Storage Instruction	Store at -20°C on receipt and minimise freeze-thaw cycles.

TARGET INFORMATION

Gene ID	2638
Gene Symbol	GC
Uniprot ID	VTDB_HUMAN
Immunogen	
Immunogen Region	Internal
Specificity	
Immunogen Sequence	CDNLSTKNSKFED



STJ71298 (0.03 µg/ml) staining of Human Lung lysate (35 µg protein in RIPA buffer). Primary incubation was 1 hour. Detected by chemiluminescence.