

Anti-DLL4 antibody (Internal) (STJ71295)

STJ71295

GENERAL INFORMATION

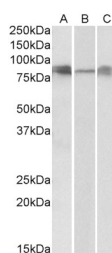
Product Type	Primary antibodies
Short Description	Goat polyclonal antibody anti-DLL4 (Internal) is suitable for use in ELISA and Western Blot research applications.
Applications	Pep-ELISA/WB
Host/Source	Goat
Reactivity	Human/Mouse/Rat

PRODUCT PROPERTIES

Clonality	Polyclonal
Clone ID	
Concentration	0.5 mg/mL
Conjugation	Unconjugated
Purification	Purified from goat serum by ammonium sulphate precipitation followed by antigen affinity chromatography using the immunizing peptide.
Dilution Range	Peptide ELISA: antibody detection limit dilution 1:64000. WB: Approx 80-85kDa bands observed in Human, Mouse and Rat Lung lysates (calculated MW of 74.6kDa according to NP_061947.1). Recommended concentration: 0.3-1µg/ml. Primary incubation was 1
Formulation	0.5 mg/ml in Tris saline, 0.02% sodium azide, pH7.3 with 0.5% bovine serum albumin. NA
Isotype	IgG
Storage Instruction	Store at -20°C on receipt and minimise freeze-thaw cycles.

TARGET INFORMATION

Gene ID	54567
Gene Symbol	DLL4
Uniprot ID	DLL4_HUMAN
Immunogen	
Immunogen Region	Internal
Specificity	Notch signaling
Immunogen Sequence	KNTNQKKELEVDC



STJ71295 (0.3 µg/ml) staining of Human (A), Mouse (B) and Rat (C) Lung lysates (55 µg protein in RIPA buffer). Detected by chemiluminescence

This product is suitable for in-vitro studies under the RESEARCH USE ONLY [RUO] licence. This product must not be used as for diagnostic or other medical purposes.
St John's Laboratory Ltd, Knowledge Dock Business Centre, University Way, London, E16 2RD | Tel: 0208 223 3081