

Anti-SMEK1/KIAA2010 antibody (Internal) (STJ71280)

STJ71280

GENERAL INFORMATION

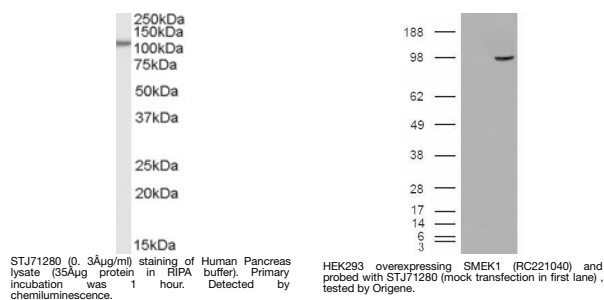
Product Type	Primary antibodies
Short Description	Goat polyclonal antibody anti-SMEK1/KIAA2010 (Internal) is suitable for use in ELISA and Western Blot research applications.
Applications	Pep-ELISA/WB
Host/Source	Goat
Reactivity	Human/Mouse/Rat/Dog

PRODUCT PROPERTIES

Clonality	Polyclonal
Clone ID	
Concentration	0.5 mg/mL
Conjugation	Unconjugated
Purification	Purified from goat serum by ammonium sulphate precipitation followed by antigen affinity chromatography using the immunizing peptide.
Dilution Range	Peptide ELISA: antibody detection limit dilution 1:16000. WB: Approx 110kDa band observed in Human Pancreas lysates (calculated MW of 93.9kDa according to NP_115949.3). In transfected HEK293 transiently expressing SMEK1 a band of approx. 95kDa is
Formulation	0.5 mg/ml in Tris saline, 0.02% sodium azide, pH7.3 with 0.5% bovine serum albumin. NA
Isotype	IgG
Storage Instruction	Store at -20°C on receipt and minimise freeze-thaw cycles.

TARGET INFORMATION

Gene ID	55671
Gene Symbol	PPP4R3A
Uniprot ID	P4R3A_HUMAN
Immunogen	
Immunogen Region	Internal
Specificity	
Immunogen Sequence	EQQRERQDNPKLD



This product is suitable for in-vitro studies under the RESEARCH USE ONLY [RUO] licence. This product must not be used as for diagnostic or other medical purposes.
St John's Laboratory Ltd, Knowledge Dock Business Centre, University Way, London, E16 2RD | Tel: 0208 223 3081