

Anti-TREM2 antibody (C-Term) (STJ71241)

STJ71241

GENERAL INFORMATION

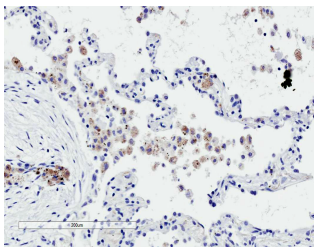
Product Type	Primary antibodies
Short Description	Goat polyclonal antibody anti-TREM2 (C-Term) is suitable for use in ELISA, Immunohistochemistry, Immunofluorescence and Flow Cytometry research applications.
Applications	Pep-ELISA/IHC/IF/FC
Host/Source	Goat
Reactivity	Human

PRODUCT PROPERTIES

Clonality	Polyclonal
Clone ID	
Concentration	0.5 mg/mL
Conjugation	Unconjugated
Purification	Purified from goat serum by ammonium sulphate precipitation followed by antigen affinity chromatography using the immunizing peptide.
Dilution Range	Peptide ELISA: antibody detection limit dilution 1:128000. IHC: In paraffin embedded Human Lung shows staining of alveolar macrophages. Recommended concentration: 2-4µg/ml. IF: Strong expression of the protein seen in U937 and HepG2 cells. Re
Formulation	0.5 mg/ml in Tris saline, 0.02% sodium azide, pH7.3 with 0.5% bovine serum albumin. NA
Isotype	IgG
Storage Instruction	Store at -20°C on receipt and minimise freeze-thaw cycles.

TARGET INFORMATION

Gene ID	54209
Gene Symbol	TREM2
Uniprot ID	TREM2_HUMAN
Immunogen	
Immunogen Region	C-Term
Specificity	
Immunogen Sequence	HGQKPGTHPPSELD



STJ71241 (2µg/ml) staining of paraffin embedded Human Lung. Microwaved antigen retrieval with citrate buffer pH 6, HRP-staining.