

Anti-DPP4/CD26 antibody (Internal) (STJ71202)

STJ71202

GENERAL INFORMATION

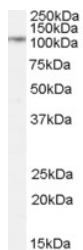
Product Type	Primary antibodies
Short Description	Goat polyclonal antibody anti-DPP4/CD26 (Internal) is suitable for use in ELISA, Immunohistochemistry and Flow Cytometry research applications.
Applications	Pep-ELISA/IHC/FC
Host/Source	Goat
Reactivity	Human/Mouse/Rat

PRODUCT PROPERTIES

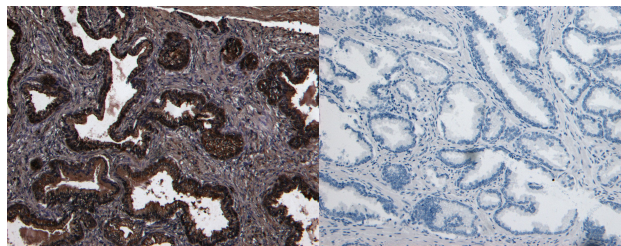
Clonality	Polyclonal
Clone ID	
Concentration	0.5 mg/mL
Conjugation	Unconjugated
Purification	Purified from goat serum by ammonium sulphate precipitation followed by antigen affinity chromatography using the immunizing peptide.
Dilution Range	Peptide ELISA: antibody detection limit dilution 1:64000. IHC: Paraffin embedded Human Prostate. Recommended concentration: 8µg/ml. FC: Flow cytometric analysis of HepG2 cells. Recommended concentration: 10µg/ml.
Formulation	0.5 mg/ml in Tris saline, 0.02% sodium azide, pH7.3 with 0.5% bovine serum albumin. NA
Isotype	IgG
Storage Instruction	Store at -20°C on receipt and minimise freeze-thaw cycles.

TARGET INFORMATION

Gene ID	1803
Gene Symbol	DPP4
Uniprot ID	DPP4_HUMAN
Immunogen	
Immunogen Region	Internal
Specificity	
Immunogen Sequence	PPHFDKSKKYP

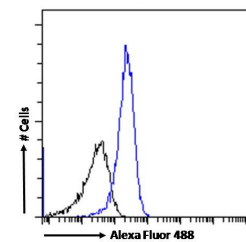


STJ71202 (0.3 µg/ml) staining of Rat Lung lysate (35 µg protein in RIPA buffer). Detected by chemiluminescence.



STJ71202 (8 µg/ml) staining of paraffin embedded Human Prostate. Heat induced antigen retrieval with citrate buffer pH 6, HRP-staining.

STJ71202 Negative Control showing staining of paraffin embedded Human Prostate, with no primary antibody.



STJ71202 Flow cytometric analysis of parafomaldehyde fixed HepG2 cells (blue line), permeabilized with 0.5% Triton. Primary incubation 1hr (10 µg/ml) followed by Alexa Fluor 488 secondary antibody (1 µg/ml). IgG control: Unimmunized goat IgG (black line) followed by Alexa Fluor 488 secondary antibody.

This product is suitable for in-vitro studies under the RESEARCH USE ONLY [RUO] licence. This product must not be used as for diagnostic or other medical purposes.

St John's Laboratory Ltd, Knowledge Dock Business Centre, University Way, London, E16 2RD | Tel: 0208 223 3081