

Anti-ASF1A/HSPC146 antibody (Internal) (STJ71180)

STJ71180

GENERAL INFORMATION

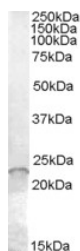
Product Type	Primary antibodies
Short Description	Goat polyclonal antibody anti-ASF1A/HSPC146 (Internal) is suitable for use in ELISA and Western Blot research applications.
Applications	Pep-ELISA/WB
Host/Source	Goat
Reactivity	Human/Mouse/Rat/Dog

PRODUCT PROPERTIES

Clonality	Polyclonal
Clone ID	
Concentration	0.5 mg/mL
Conjugation	Unconjugated
Purification	Purified from goat serum by ammonium sulphate precipitation followed by antigen affinity chromatography using the immunizing peptide.
Dilution Range	Peptide ELISA: antibody detection limit dilution 1:1000. WB: Approx. 23kDa band observed in lysates of cell line Jurkat (calculated MW of 23.0kDa according to NP_054753.1). Recommended concentration: 0.01-0.03µg/mL.
Formulation	0.5 mg/mL in Tris saline, 0.02% sodium azide, pH7.3 with 0.5% bovine serum albumin. NA
Isotype	IgG
Storage Instruction	Store at -20°C on receipt and minimise freeze-thaw cycles.

TARGET INFORMATION

Gene ID	25842
Gene Symbol	ASF1A
Uniprot ID	ASF1A_HUMAN
Immunogen	
Immunogen Region	Internal
Specificity	
Immunogen Sequence	EDNTEKLEDAE



STJ71180 (0.01µg/mL) staining of Jurkat cell lysate (35µg protein in RIPA buffer). Primary incubation was 1 hour. Detected by chemiluminescence.

This product is suitable for in-vitro studies under the RESEARCH USE ONLY [RUO] licence. This product must not be used as for diagnostic or other medical purposes.
St John's Laboratory Ltd, Knowledge Dock Business Centre, University Way, London, E16 2RD | Tel: 0208 223 3081