

Anti-ILF2/NF45 antibody (Internal) (STJ71178)

STJ71178

GENERAL INFORMATION

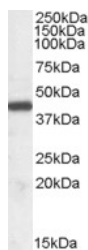
Product Type	Primary antibodies
Short Description	Goat polyclonal antibody anti-ILF2/NF45 (Internal) is suitable for use in ELISA and Western Blot research applications.
Applications	Pep-ELISA/WB
Host/Source	Goat
Reactivity	Human/Mouse/Rat/Dog

PRODUCT PROPERTIES

Clonality	Polyclonal
Clone ID	
Concentration	0.5 mg/mL
Conjugation	Unconjugated
Purification	Purified from goat serum by ammonium sulphate precipitation followed by antigen affinity chromatography using the immunizing peptide.
Dilution Range	Peptide ELISA: antibody detection limit dilution 1:4000. WB: Approx 43kDa band observed in Human Tonsil and Thymus lysates (calculated MW of 43.1kDa according to NP_004506.2). Recommended concentration: 0.03-0.1µg/ml. This antibody has been succe
Formulation	0.5 mg/ml in Tris saline, 0.02% sodium azide, pH7.3 with 0.5% bovine serum albumin. NA
Isotype	IgG
Storage Instruction	Store at -20°C on receipt and minimise freeze-thaw cycles.

TARGET INFORMATION

Gene ID	3608
Gene Symbol	ILF2
Uniprot ID	ILF2_HUMAN
Immunogen	
Immunogen Region	Internal
Specificity	This antibody is expected to recognize both reported isoforms (NP_004506.2; NP_001254738.1).
Immunogen Sequence	EKAYEKPEKKEG



STJ71178 (0.03µg/ml) staining of Human Tonsil lysate (35µg protein in RIPA buffer). Primary incubation was 1 hour. Detected by chemiluminescence.