

Anti-PAX6 antibody (Internal) (STJ71170)

STJ71170

GENERAL INFORMATION

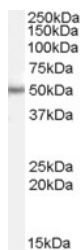
Product Type	Primary antibodies
Short Description	Goat polyclonal antibody anti-PAX6 (Internal) is suitable for use in ELISA, Western Blot and Flow Cytometry research applications.
Applications	Pep-ELISA/WB/FC
Host/Source	Goat
Reactivity	Human/Mouse/Rat/Frog/Cow

PRODUCT PROPERTIES

Clonality	Polyclonal
Clone ID	
Concentration	0.5 mg/mL
Conjugation	Unconjugated
Purification	Purified from goat serum by ammonium sulphate precipitation followed by antigen affinity chromatography using the immunizing peptide.
Dilution Range	Peptide ELISA: antibody detection limit dilution 1:32000. WB: Approx 26kDa band observed in lysates of cell lines U251 and RAW264.7 and in nuclear lysates of cell lines K562 and HeLa, all successfully blocked by incubation with the immunising pep
Formulation	0.5 mg/ml in Tris saline, 0.02% sodium azide, pH7.3 with 0.5% bovine serum albumin. NA
Isotype	IgG
Storage Instruction	Store at -20°C on receipt and minimise freeze-thaw cycles.

TARGET INFORMATION

Gene ID	5080
Gene Symbol	PAX6
Uniprot ID	PAX6_HUMAN
Immunogen	
Immunogen Region	Internal
Specificity	This antibody is expected to recognise both reported isoforms (NP_000271.1 and NP_001595.2).
Immunogen Sequence	REEKLRNQRRQASN



STJ71170 (0.5 µg/ml) staining of Mouse Eye lysate (35 µg protein in RIPA buffer). Detected by chemiluminescence.

This product is suitable for in-vitro studies under the RESEARCH USE ONLY [RUO] licence. This product must not be used as for diagnostic or other medical purposes.
St John's Laboratory Ltd, Knowledge Dock Business Centre, University Way, London, E16 2RD | Tel: 0208 223 3081