

Anti-KCNJ11/KATP/ antibody (Internal) (STJ71166)

STJ71166

GENERAL INFORMATION

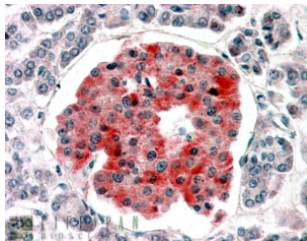
Product Type	Primary antibodies
Short Description	Goat polyclonal antibody anti-KCNJ11/KATP/ (Internal) is suitable for use in ELISA, Western Blot and Immunohistochemistry research applications.
Applications	Pep-ELISA/WB/IHC
Host/Source	Goat
Reactivity	Human

PRODUCT PROPERTIES

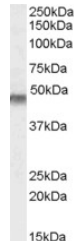
Clonality	Polyclonal
Clone ID	
Concentration	0.5 mg/mL
Conjugation	Unconjugated
Purification	Purified from goat serum by ammonium sulphate precipitation followed by antigen affinity chromatography using the immunizing peptide.
Dilution Range	Peptide ELISA: antibody detection limit dilution 1:32000. WB: Approx 45-48kDa band observed in Human Skeletal Muscle lysates (calculated MW of 43.5kDa according to NP_000516.3). Recommended concentration: 0.1-0.3µg/ml. IHC: In paraffin embedd
Formulation	0.5 mg/ml in Tris saline, 0.02% sodium azide, pH7.3 with 0.5% bovine serum albumin. NA
Isotype	IgG
Storage	Store at -20°C on receipt and minimise freeze-thaw cycles.
Instruction	

TARGET INFORMATION

Gene ID	3767
Gene Symbol	KCNJ11
Uniprot ID	KCJ11_HUMAN
Immunogen	
Immunogen Region	Internal
Specificity	This antibody is expected to recognise isoform 1 (NP_000516.3) only.
Immunogen Sequence	AEDPAKPRYRARQ



STJ71166 (3.8µg/ml) staining of paraffin embedded Human Pancreas. Steamed antigen retrieval with citrate buffer pH 6, AP-staining.



STJ71166 (0.1µg/ml) staining of Human Muscle lysate (35µg protein in RIPA buffer). Primary incubation was 1 hour. Detected by chemiluminescence.

This product is suitable for in-vitro studies under the RESEARCH USE ONLY [RUO] licence. This product must not be used as for diagnostic or other medical purposes.
St John's Laboratory Ltd, Knowledge Dock Business Centre, University Way, London, E16 2RD | Tel: 0208 223 3081