

## Anti-CLIC4 antibody (N-Term) (STJ71151)

STJ71151

### GENERAL INFORMATION

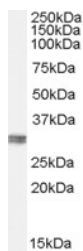
<b>Product Type</b>	Primary antibodies
<b>Short Description</b>	Goat polyclonal antibody anti-CLIC4 (N-Term) is suitable for use in ELISA, Western Blot, Immunohistochemistry and Immunofluorescence research applications.
<b>Applications</b>	Pep-ELISA/WB/IHC/IF
<b>Host/Source</b>	Goat
<b>Reactivity</b>	Human/Mouse/Rat/Dog

### PRODUCT PROPERTIES

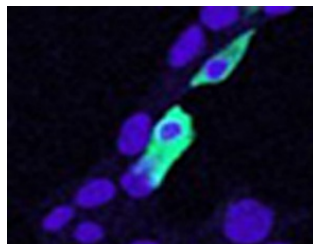
<b>Clonality</b>	Polyclonal
<b>Clone ID</b>	
<b>Concentration</b>	0.5 mg/mL
<b>Conjugation</b>	Unconjugated
<b>Purification</b>	Purified from goat serum by ammonium sulphate precipitation followed by antigen affinity chromatography using the immunizing peptide.
<b>Dilution Range</b>	Peptide ELISA: antibody detection limit dilution 1:64000. WB: Approx 30kDa band observed in Human Kidney and Placenta lysates (calculated MW of 28.8kDa according to NP_039234.1). The observed molecular weight corresponds to earlier findings in li
<b>Formulation</b>	0.5 mg/ml in Tris saline, 0.02% sodium azide, pH7.3 with 0.5% bovine serum albumin. NA
<b>Isotype</b>	IgG
<b>Storage Instruction</b>	Store at -20°C on receipt and minimise freeze-thaw cycles.

### TARGET INFORMATION

<b>Gene ID</b>	25932
<b>Gene Symbol</b>	CLIC4
<b>Uniprot ID</b>	CLIC4_HUMAN
<b>Immunogen</b>	
<b>Immunogen Region</b>	N-Term
<b>Specificity</b>	
<b>Immunogen Sequence</b>	NGLKEEDKEPLIE



STJ71151 (0.1 µg/ml) staining of Human Kidney lysate (35 µg protein in RIPA buffer). Primary incubation was 1 hour. Detected by chemiluminescence.



STJ71151 (5 µg/ml) staining of min6 cells transiently expressing mouse Clc4. Nuclear counter staining by Hoechst. Data kindly provided by Dr. Virginie Nepote, Lausanne University, Switzerland.

This product is suitable for in-vitro studies under the RESEARCH USE ONLY [RUO] licence. This product must not be used as for diagnostic or other medical purposes.  
St John's Laboratory Ltd, Knowledge Dock Business Centre, University Way, London, E16 2RD | Tel: 0208 223 3081