

Anti-GPX3 antibody (Internal) (STJ71124)

STJ71124

GENERAL INFORMATION

Product Type	Primary antibodies
Short Description	Goat polyclonal antibody anti-GPX3 (Internal) is suitable for use in ELISA, Western Blot and Immunohistochemistry research applications.
Applications	Pep-ELISA/WB/IHC
Host/Source	Goat
Reactivity	Human/Mouse/Rat/Dog/Pig

PRODUCT PROPERTIES

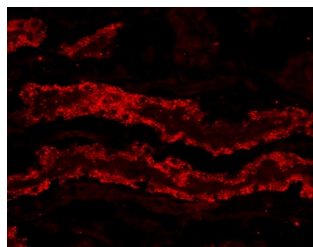
Clonality	Polyclonal
Clone ID	
Concentration	0.5 mg/mL
Conjugation	Unconjugated
Purification	Purified from goat serum by ammonium sulphate precipitation followed by antigen affinity chromatography using the immunizing peptide.
Dilution Range	Peptide ELISA: antibody detection limit dilution 1:8000. WB: Approx 26kDa band observed in Mouse Heart lysates (calculated MW of 27.7kDa according to Mouse NP_001077398.1 [isoform1] and 25.4kDa according to Mouse NP_032187.2 [isoform 2]). Recomm
Formulation	0.5 mg/ml in Tris saline, 0.02% sodium azide, pH7.3 with 0.5% bovine serum albumin. NA
Isotype	IgG
Storage Instruction	Store at -20°C on receipt and minimise freeze-thaw cycles.

TARGET INFORMATION

Gene ID	2878
Gene Symbol	GPX3
Uniprot ID	GPX3_HUMAN
Immunogen	
Immunogen Region	Internal
Specificity	This antibody may cross-react with epididymis-specific GPX5 and olfactory epithelium-specific GPX6
Immunogen Sequence	NQFGKQEPGENSE

250kDa
150kDa
100kDa
75kDa
50kDa
37kDa
25kDa
20kDa
15kDa

STJ71124 (1µg/ml) staining of Mouse Heart lysate (35µg protein in RIPA buffer). Detected by chemiluminescence.



STJ71124 (20µg/ml) staining of PFA-perfused cryosection of Porcine Kidney. Microwave antigen retrieval with citrate buffer pH 3, CY3-staining. Data obtained from Dr. Hrvoje Brzica, University of Zagreb, Croatia.

This product is suitable for in-vitro studies under the RESEARCH USE ONLY [RUO] licence. This product must not be used as for diagnostic or other medical purposes.
St John's Laboratory Ltd, Knowledge Dock Business Centre, University Way, London, E16 2RD | Tel: 0208 223 3081