

Anti-Latexin antibody (C-Term) (STJ71123)

STJ71123

GENERAL INFORMATION

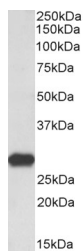
Product Type	Primary antibodies
Short Description	Goat polyclonal antibody anti-Latexin (C-Term) is suitable for use in ELISA, Western Blot, Immunohistochemistry and Immunofluorescence research applications.
Applications	Pep-ELISA/WB/IHC/IF
Host/Source	Goat
Reactivity	Human/Mouse/Rat/Dog

PRODUCT PROPERTIES

Clonality	Polyclonal
Clone ID	
Concentration	0.5 mg/mL
Conjugation	Unconjugated
Purification	Purified from goat serum by ammonium sulphate precipitation followed by antigen affinity chromatography using the immunizing peptide.
Dilution Range	Peptide ELISA: antibody detection limit dilution 1:128000. WB: Approx 28kDa band observed in lysates of Human Brain (Cerebellum) , Mouse Brain and Rat Brain (calculated MW of 25.8kDa according to NP_064554.2). Recommended concentration: 0.3-1µg/m
Formulation	0.5 mg/ml in Tris saline, 0.02% sodium azide, pH7.3 with 0.5% bovine serum albumin. NA
Isotype	IgG
Storage Instruction	Store at -20°C on receipt and minimise freeze-thaw cycles.

TARGET INFORMATION

Gene ID	56925
Gene Symbol	LXN
Uniprot ID	LXN_HUMAN
Immunogen	
Immunogen Region	C-Term
Specificity	
Immunogen Sequence	QYGTKVKHNSRLPKE



STJ71123 (0.3 µg/ml) staining of Rat Brain lysate (35 µg protein in RIPA buffer). Primary incubation was 1 hour. Detected by chemiluminescence.

This product is suitable for in-vitro studies under the RESEARCH USE ONLY [RUO] licence. This product must not be used as for diagnostic or other medical purposes.
St John's Laboratory Ltd, Knowledge Dock Business Centre, University Way, London, E16 2RD | Tel: 0208 223 3081