

Anti-KLK2 antibody (Internal) (STJ71120)

STJ71120

GENERAL INFORMATION

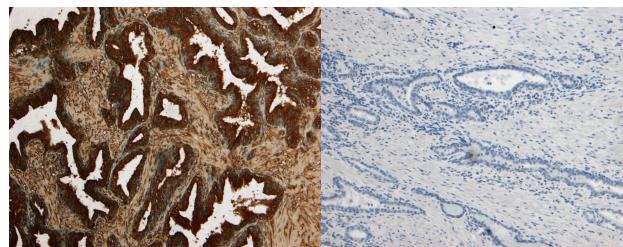
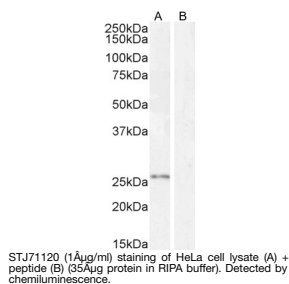
Product Type	Primary antibodies
Short Description	Goat polyclonal antibody anti-KLK2 (Internal) is suitable for use in ELISA, Western Blot and Immunohistochemistry research applications.
Applications	Pep-ELISA/WB/IHC
Host/Source	Goat
Reactivity	Human

PRODUCT PROPERTIES

Clonality	Polyclonal
Clone ID	
Concentration	0.5 mg/mL
Conjugation	Unconjugated
Purification	Purified from goat serum by ammonium sulphate precipitation followed by antigen affinity chromatography using the immunizing peptide.
Dilution Range	Peptide ELISA: antibody detection limit dilution 1:64000. WB: Approx 26kDa band observed in lysates of cell line HeLa, which was successfully blocked by incubation with the immunizing peptide (calculated MW of 28.7 according to NP_005542.1 and 24
Formulation	0.5 mg/ml in Tris saline, 0.02% sodium azide, pH7.3 with 0.5% bovine serum albumin. NA
Isotype	IgG
Storage Instruction	Store at -20°C on receipt and minimise freeze-thaw cycles.

TARGET INFORMATION

Gene ID	3817
Gene Symbol	KLK2
Uniprot ID	KLK2_HUMAN
Immunogen	
Immunogen Region	Internal
Specificity	This antibody is expected to recognize both reported isoforms (NP_005542.1; NP_001002231.1).
Immunogen Sequence	KHQSLRPDEDSSHD



STJ71120 (8µg/ml) staining of paraffin embedded Human Prostate. Heat induced antigen retrieval with citrate buffer pH 6, HRP-staining.

STJ71120 Negative Control showing staining of paraffin embedded Human Prostate, with no primary antibody.

This product is suitable for in-vitro studies under the RESEARCH USE ONLY [RUO] licence. This product must not be used as for diagnostic or other medical purposes.
St John's Laboratory Ltd, Knowledge Dock Business Centre, University Way, London, E16 2RD | Tel: 0208 223 3081