

Anti-P4HA1 antibody (Internal) (STJ71115)

STJ71115

GENERAL INFORMATION

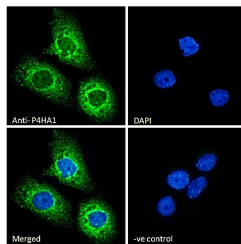
Product Type	Primary antibodies
Short Description	Goat polyclonal antibody anti-P4HA1 (Internal) is suitable for use in ELISA, Immunofluorescence and Immunohistochemistry research applications.
Applications	Pep-ELISA/IF/IHC
Host/Source	Goat
Reactivity	Human/Dog/Cow

PRODUCT PROPERTIES

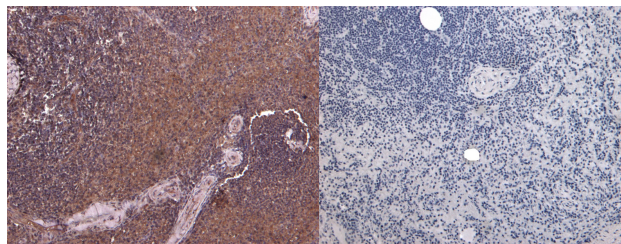
Clonality	Polyclonal
Clone ID	
Concentration	0.5 mg/mL
Conjugation	Unconjugated
Purification	Purified from goat serum by ammonium sulphate precipitation followed by antigen affinity chromatography using the immunizing peptide.
Dilution Range	Peptide ELISA: antibody detection limit dilution 1:128000. IHC: Paraffin embedded Human Spleen. Recommended concentration: 7µg/ml. IF: Strong expression of the protein seen in the ER and cytoplasm of A431 cells. Recommended concentration: 10µg/ml
Formulation	0.5 mg/ml in Tris saline, 0.02% sodium azide, pH7.3 with 0.5% bovine serum albumin. NA
Isotype	IgG
Storage Instruction	Store at -20°C on receipt and minimise freeze-thaw cycles.

TARGET INFORMATION

Gene ID	5033
Gene Symbol	P4HA1
Uniprot ID	P4HA1_HUMAN
Immunogen	
Immunogen Region	Internal
Specificity	This antibody is expected to recognise both reported isoforms (NP_000908.2 and NP_001017962.1).
Immunogen Sequence	DFARKDEPDAFKE



STJ71115 Immunofluorescence analysis of paraformaldehyde fixed A431 cells, permeabilized with 0.15% Triton. Primary incubation 1hr (10µg/ml) followed by Alexa Fluor 488 secondary antibody (2µg/ml) showing endoplasmic reticulum and cytoplasmic staining. The nuclear stain is DAPI (blue). Negative control: Unimmunized goat IgG (10µg/ml) followed by Alexa Fluor 488 secondary antibody (2µg/ml).



STJ71115 (7µg/ml) staining of paraffin embedded Human Spleen. Heat induced antigen retrieval with citrate buffer pH 6, HRP-staining.

STJ71115 Negative Control showing staining of paraffin embedded Human Spleen, with no primary antibody.