

Anti-CGI58/ABHD5 antibody (Internal) (STJ71112)

STJ71112

GENERAL INFORMATION

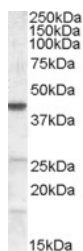
Product Type	Primary antibodies
Short Description	Goat polyclonal antibody anti-CGI58/ABHD5 (Internal) is suitable for use in ELISA, Western Blot, Immunofluorescence and Immunohistochemistry research applications.
Applications	Pep-ELISA/WB/IF/IHC
Host/Source	Goat
Reactivity	Human/Mouse/Rat/Dog

PRODUCT PROPERTIES

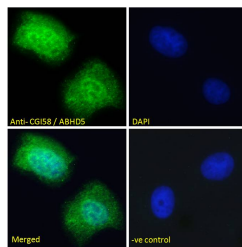
Clonality	Polyclonal
Clone ID	
Concentration	0.5 mg/mL
Conjugation	Unconjugated
Purification	Purified from goat serum by ammonium sulphate precipitation followed by antigen affinity chromatography using the immunizing peptide.
Dilution Range	Peptide ELISA: antibody detection limit dilution 1:16000. WB: Approx 40kDa band observed in lysates of cell lines NIH3T3/3TL (calculated MW of 39.1kDa according to NP_057090.2). Additional faint bands of 26kDa and 18kDa were also observed, and we
Formulation	0.5 mg/ml in Tris saline, 0.02% sodium azide, pH7.3 with 0.5% bovine serum albumin. NA
Isotype	IgG
Storage Instruction	Store at -20°C on receipt and minimise freeze-thaw cycles.

TARGET INFORMATION

Gene ID	51099
Gene Symbol	ABHD5
Uniprot ID	ABHD5_HUMAN
Immunogen	
Immunogen Region	Internal
Specificity	This antibody is not expected to cross-react with ABHD4.
Immunogen Sequence	FPERPDLADQDR



STJ71112 (0.2 µg/ml) staining of NIH3T3 lysate (35 µg protein in RIPA buffer). Detected by chemiluminescence.



STJ71112 Immunofluorescence analysis of paraformaldehyde fixed U2OS cells, permeabilized with 0.15% Triton. Primary incubation 1hr (10 µg/ml) followed by Alexa Fluor 488 secondary antibody (2 µg/ml), showing nuclear and vesicle/cytoplasmic staining. The nuclear stain is DAPI (blue). Negative control: Unimmunized goat IgG (10 µg/ml) followed by Alexa Fluor 488 secondary antibody (2 µg/ml).

This product is suitable for in-vitro studies under the RESEARCH USE ONLY [RUO] licence. This product must not be used as for diagnostic or other medical purposes.
St John's Laboratory Ltd, Knowledge Dock Business Centre, University Way, London, E16 2RD | Tel: 0208 223 3081