

Anti-FAIM1 antibody (Internal) (STJ71095)

STJ71095

GENERAL INFORMATION

Product Type	Primary antibodies
Short Description	Goat polyclonal antibody anti-FAIM1 (Internal) is suitable for use in ELISA, Western Blot and Immunohistochemistry research applications.
Applications	Pep-ELISA/WB/IHC
Host/Source	Goat
Reactivity	Human/Mouse/Rat/Dog

PRODUCT PROPERTIES

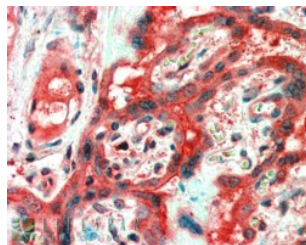
Clonality	Polyclonal
Clone ID	
Concentration	0.5 mg/mL
Conjugation	Unconjugated
Purification	Purified from goat serum by ammonium sulphate precipitation followed by antigen affinity chromatography using the immunizing peptide.
Dilution Range	Peptide ELISA: antibody detection limit dilution 1:32000. WB: Approx 25kDa band observed in Human Lymph Node lysates (calculated MW of 24.0kDa according to NP_001028202.1). Recommended concentration: 0.5-1µg/ml. IHC: In paraffin embedded Huma
Formulation	0.5 mg/ml in Tris saline, 0.02% sodium azide, pH7.3 with 0.5% bovine serum albumin. NA
Isotype	IgG
Storage	Store at -20°C on receipt and minimise freeze-thaw cycles.
Instruction	

TARGET INFORMATION

Gene ID	55179
Gene Symbol	FAIM
Uniprot ID	FAIM1_HUMAN
Immunogen	
Immunogen Region	Internal
Specificity	This antibody is expected to recognise all reported isoforms (NP_001028202.1; NP_001028203.1; NP_001028204.1; NP_060617.1).
Immunogen Sequence	KKYMEDRSKTTN



STJ71095 (0.5µg/ml) staining of Human Lymph Node lysate (35µg protein in RIPA buffer). Primary incubation was 1 hour. Detected by chemiluminescence.



STJ71095 (2.5µg/ml) staining of paraffin embedded Human Placenta. Steamed antigen retrieval with citrate buffer pH 6, AP-staining.

This product is suitable for in-vitro studies under the RESEARCH USE ONLY [RUO] licence. This product must not be used as for diagnostic or other medical purposes.
St John's Laboratory Ltd, Knowledge Dock Business Centre, University Way, London, E16 2RD | Tel: 0208 223 3081