

Anti-FEZ1/Zygin 1 antibody (Internal) (STJ71041)

STJ71041

GENERAL INFORMATION

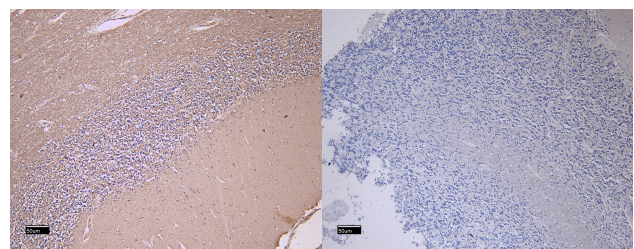
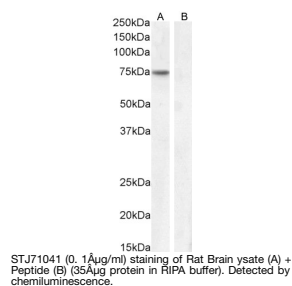
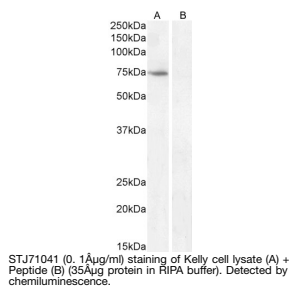
Product Type	Primary antibodies
Short Description	Goat polyclonal antibody anti-FEZ1/Zygin 1 (Internal) is suitable for use in ELISA, Western Blot and Immunohistochemistry research applications.
Applications	Pep-ELISA/WB/IHC
Host/Source	Goat
Reactivity	Human/Mouse/Rat/Dog

PRODUCT PROPERTIES

Clonality	Polyclonal
Clone ID	
Concentration	0.5 mg/mL
Conjugation	Unconjugated
Purification	Purified from goat serum by ammonium sulphate precipitation followed by antigen affinity chromatography using the immunizing peptide.
Dilution Range	Peptide ELISA: antibody detection limit dilution 1:64000. WB: Approx 75kDa band observed in lysates of cell line Kelly, ans in Rat Brain lysates (calculated MW of 45.1kDa according to human NP_005094.1 and 45.2kDa according to Rat NP_112328.1). T
Formulation	0.5 mg/ml in Tris saline, 0.02% sodium azide, pH7.3 with 0.5% bovine serum albumin. NA
Isotype	IgG
Storage Instruction	Store at -20°C on receipt and minimise freeze-thaw cycles.

TARGET INFORMATION

Gene ID	9638
Gene Symbol	FEZ1
Uniprot ID	FEZ1_HUMAN
Immunogen	
Immunogen Region	Internal
Specificity	This antibody is expected to recognize isoform 1 (NP_005094.1) only.
Immunogen Sequence	QNKQKEQRELMKK



STJ71041 (5 µg/ml) staining of paraffin embedded Human Cerebellum. Heat induced antigen retrieval with citrate buffer pH 6, HRP-staining.

STJ71041 Negative Control showing staining of paraffin embedded Human Cerebellum, with no primary antibody.

This product is suitable for in-vitro studies under the RESEARCH USE ONLY [RUO] licence. This product must not be used as for diagnostic or other medical purposes.
St John's Laboratory Ltd, Knowledge Dock Business Centre, University Way, London, E16 2RD | Tel: 0208 223 3081