

Anti-PICK1 antibody (Internal) (STJ71020)

STJ71020

GENERAL INFORMATION

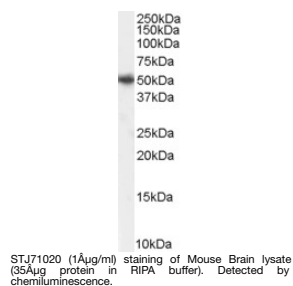
| | |
|--------------------------|---|
| Product Type | Primary antibodies |
| Short Description | Goat polyclonal antibody anti-PICK1 (Internal) is suitable for use in ELISA, Western Blot and Immunohistochemistry research applications. |
| Applications | Pep-ELISA/WB/IHC |
| Host/Source | Goat |
| Reactivity | Human/Mouse/Rat/Dog/Pig/Cow |

PRODUCT PROPERTIES

| | |
|----------------------------|---|
| Clonality | Polyclonal |
| Clone ID | |
| Concentration | 0.5 mg/mL |
| Conjugation | Unconjugated |
| Purification | Purified from goat serum by ammonium sulphate precipitation followed by antigen affinity chromatography using the immunizing peptide. |
| Dilution Range | Peptide ELISA: antibody detection limit dilution 1:16000. WB: Approx 50kDa band observed in Mouse Brain lysates (calculated MW of 46.6kDa according to NP_036539.1, NP_001034672.1 and NP_001034673.1). Recommended concentration: 1-3µg/mL. Primary in 0.5 mg/mL in Tris saline, 0.02% sodium azide, pH7.3 with 0.5% bovine serum albumin. NA |
| Formulation | |
| Isotype | IgG |
| Storage Instruction | Store at -20°C on receipt and minimise freeze-thaw cycles. |

TARGET INFORMATION

| | |
|---------------------------|--|
| Gene ID | 9463 |
| Gene Symbol | PICK1 |
| Uniprot ID | PICK1_HUMAN |
| Immunogen | |
| Immunogen Region | Internal |
| Specificity | Reported variants represent identical protein (NP_036539.1; NP_001034672.1; NP_001034673.1). |
| Immunogen Sequence | HYNKLQADPKQ |



This product is suitable for in-vitro studies under the RESEARCH USE ONLY [RUO] licence. This product must not be used as for diagnostic or other medical purposes.
St John's Laboratory Ltd, Knowledge Dock Business Centre, University Way, London, E16 2RD | Tel: 0208 223 3081