

## Anti-Robo1/DUTT1-Mouse antibody (Internal) (STJ71019)

STJ71019

### GENERAL INFORMATION

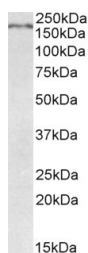
<b>Product Type</b>	Primary antibodies
<b>Short Description</b>	Goat polyclonal antibody anti-Robo1/DUTT1-Mouse (Internal) is suitable for use in ELISA, Western Blot and Immunohistochemistry research applications.
<b>Applications</b>	Pep-ELISA/WB/IHC
<b>Host/Source</b>	Goat
<b>Reactivity</b>	Mouse/Rat/Dog

### PRODUCT PROPERTIES

<b>Clonality</b>	Polyclonal
<b>Clone ID</b>	
<b>Concentration</b>	0.5 mg/mL
<b>Conjugation</b>	Unconjugated
<b>Purification</b>	Purified from goat serum by ammonium sulphate precipitation followed by antigen affinity chromatography using the immunizing peptide.
<b>Dilution Range</b>	Peptide ELISA: antibody detection limit dilution 1:128000. WB: Approx 200kDa band observed in fetal Mouse Brain lysates (calculated MW of 176kDa according to NP_062286.2). Recommended concentration: 0.05-0.2µg/mL. Primary incubation was 1 hour.
<b>Formulation</b>	0.5 mg/mL in Tris saline, 0.02% sodium azide, pH7.3 with 0.5% bovine serum albumin. NA
<b>Isotype</b>	IgG
<b>Storage Instruction</b>	Store at -20°C on receipt and minimise freeze-thaw cycles.

### TARGET INFORMATION

<b>Gene ID</b>	
<b>Gene Symbol</b>	
<b>Uniprot ID</b>	
<b>Immunogen</b>	
<b>Immunogen Region</b>	Internal
<b>Specificity</b>	
<b>Immunogen Sequence</b>	QKARPAKKQKHQ



STJ71019 (0.05µg/mL) staining of fetal Mouse Brain lysate (55µg protein in RIPA buffer). Detected by chemiluminescence.