

Anti-STAT3 antibody (Internal) (STJ70982)

STJ70982

GENERAL INFORMATION

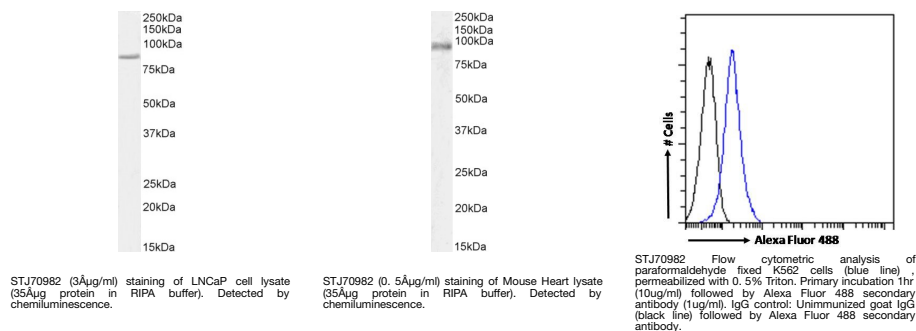
Product Type	Primary antibodies
Short Description	Goat polyclonal antibody anti-STAT3 (Internal) is suitable for use in ELISA, Western Blot, Immunohistochemistry and Flow Cytometry research applications.
Applications	Pep-ELISA/WB/IHC/FC
Host/Source	Goat
Reactivity	Human/Mouse/Rat/Dog

PRODUCT PROPERTIES

Clonality	Polyclonal
Clone ID	
Concentration	0.5 mg/mL
Conjugation	Unconjugated
Purification	Purified from goat serum by ammonium sulphate precipitation followed by antigen affinity chromatography using the immunizing peptide.
Dilution Range	Peptide ELISA: antibody detection limit dilution 1:16000. WB: Approx 85kDa band observed in lysates of cell line LNCaP, and approx. 90kDa in Mouse Heart lysates (calculated MW of 83.1kDa according to Human NP_998827.1 and 88.1kDa according to Mou
Formulation	0.5 mg/ml in Tris saline, 0.02% sodium azide, pH7.3 with 0.5% bovine serum albumin. NA
Isotype	IgG
Storage Instruction	Store at -20°C on receipt and minimise freeze-thaw cycles.

TARGET INFORMATION

Gene ID	6774
Gene Symbol	STAT3
Uniprot ID	STAT3_HUMAN
Immunogen	
Immunogen Region	Internal
Specificity	This antibody is expected to recognise all three reported isoforms (NP_644805.1, NP_003141.2 and NP_998827.1).
Immunogen Sequence	CRPESQEHPEADP



This product is suitable for in-vitro studies under the RESEARCH USE ONLY [RUO] licence. This product must not be used as for diagnostic or other medical purposes.
St John's Laboratory Ltd, Knowledge Dock Business Centre, University Way, London, E16 2RD | Tel: 0208 223 3081