

Anti-Silver homologue/Pmel 17 antibody (C-Term) (STJ70950)

STJ70950

GENERAL INFORMATION

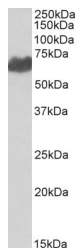
Product Type	Primary antibodies
Short Description	Goat polyclonal antibody anti-Silver homologue/Pmel 17 (C-Term) is suitable for use in ELISA and Immunohistochemistry research applications.
Applications	Pep-ELISA/IHC
Host/Source	Goat
Reactivity	Human/Mouse

PRODUCT PROPERTIES

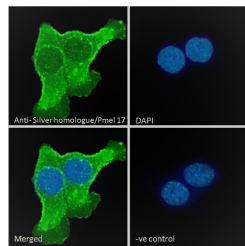
Clonality	Polyclonal
Clone ID	
Concentration	0.5 mg/mL
Conjugation	Unconjugated
Purification	Purified from goat serum by ammonium sulphate precipitation followed by antigen affinity chromatography using the immunizing peptide.
Dilution Range	Peptide ELISA: antibody detection limit dilution 1:32000. IHC: Paraffin embedded Human Melanoma. Recommended concentration: 6-7µg/ml.
Formulation	0.5 mg/ml in Tris saline, 0.02% sodium azide, pH7.3 with 0.5% bovine serum albumin. NA
Isotype	IgG
Storage Instruction	Store at -20°C on receipt and minimise freeze-thaw cycles.

TARGET INFORMATION

Gene ID	6490
Gene Symbol	PMEL
Uniprot ID	PMEL_HUMAN
Immunogen	
Immunogen Region	C-Term
Specificity	
Immunogen Sequence	CPIGENSPLLSGQQ



STJ70950 (1Åug/ml) staining of Mouse Skin lysate (35µg protein in RIPA buffer). Detected by chemiluminescence.



STJ70950 Immunofluorescence analysis of paraformaldehyde fixed A431 cells, permeabilized with 0.15% Triton. Primary incubation 1hr (10µg/ml) followed by Alexa Fluor 488 secondary antibody (2µg/ml), showing membrane and cytoplasmic staining. The nuclear stain is DAPI (blue). Negative control: Unimmunized goat IgG (10µg/ml) followed by Alexa Fluor 488 secondary antibody (2µg/ml).

This product is suitable for in-vitro studies under the RESEARCH USE ONLY [RUO] licence. This product must not be used as for diagnostic or other medical purposes.
St John's Laboratory Ltd, Knowledge Dock Business Centre, University Way, London, E16 2RD | Tel: 0208 223 3081