

Anti-NMDAR2B/GRIN2B antibody (Internal) (STJ70948)

STJ70948

GENERAL INFORMATION

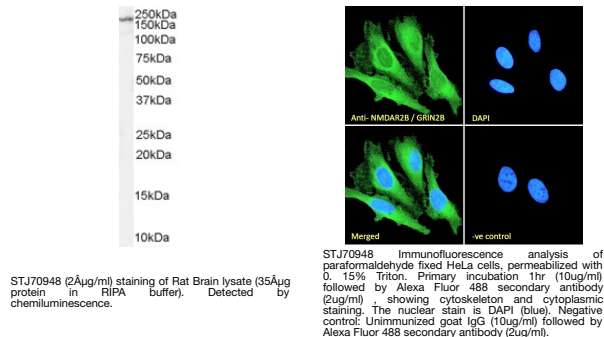
Product Type	Primary antibodies
Short Description	Goat polyclonal antibody anti-NMDAR2B/GRIN2B (Internal) is suitable for use in ELISA, Western Blot and Immunofluorescence research applications.
Applications	Pep-ELISA/WB/IF
Host/Source	Goat
Reactivity	Human/Mouse/Rat/Dog

PRODUCT PROPERTIES

Clonality	Polyclonal
Clone ID	
Concentration	0.5 mg/mL
Conjugation	Unconjugated
Purification	Purified from goat serum by ammonium sulphate precipitation followed by antigen affinity chromatography using the immunizing peptide.
Dilution Range	Peptide ELISA: antibody detection limit dilution 1:16000. WB: Approx 170kDa band observed in Rat Brain lysates (calculated MW of 166kDa according to NP_000825.1). Recommended concentration: 2-4µg/ml. Primary incubation was 1 hour. IF: Strong
Formulation	0.5 mg/ml in Tris saline, 0.02% sodium azide, pH7.3 with 0.5% bovine serum albumin. NA
Isotype	IgG
Storage	Store at -20°C on receipt and minimise freeze-thaw cycles.
Instruction	

TARGET INFORMATION

Gene ID	2904
Gene Symbol	GRIN2B
Uniprot ID	NMDE2_HUMAN
Immunogen	
Immunogen Region	Internal
Specificity	
Immunogen Sequence	KDAHEKDDFHLS



This product is suitable for in-vitro studies under the RESEARCH USE ONLY [RUO] licence. This product must not be used as for diagnostic or other medical purposes.
St John's Laboratory Ltd, Knowledge Dock Business Centre, University Way, London, E16 2RD | Tel: 0208 223 3081