

Anti-SLIT2 antibody (Internal) (STJ70945)

STJ70945

GENERAL INFORMATION

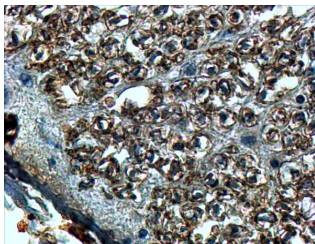
Product Type	Primary antibodies
Short Description	Goat polyclonal antibody anti-SLIT2 (Internal) is suitable for use in ELISA and Immunohistochemistry research applications.
Applications	Pep-ELISA/IHC
Host/Source	Goat
Reactivity	Human/Mouse/Rat/Dog

PRODUCT PROPERTIES

Clonality	Polyclonal
Clone ID	
Concentration	0.5 mg/mL
Conjugation	Unconjugated
Purification	Purified from goat serum by ammonium sulphate precipitation followed by antigen affinity chromatography using the immunizing peptide.
Dilution Range	Peptide ELISA: antibody detection limit dilution 1:1000. IHC: In paraffin embedded Human Spinal Cord shows staining of the cellular membrane in the bundles of sensory fibres. Recommended concentration, 4-8µg/ml.
Formulation	0.5 mg/ml in Tris saline, 0.02% sodium azide, pH7.3 with 0.5% bovine serum albumin. NA
Isotype	IgG
Storage Instruction	Store at -20°C on receipt and minimise freeze-thaw cycles.

TARGET INFORMATION

Gene ID	9353
Gene Symbol	SLIT2
Uniprot ID	SLIT2_HUMAN
Immunogen	
Immunogen Region	Internal
Specificity	
Immunogen Sequence	DDCQDNKCKNGAH



STJ70945 (4µg/ml) staining of paraffin embedded Human Spinal Cord. Steamed antigen retrieval with Tris/EDTA buffer pH 9, HRP-staining.

This product is suitable for in-vitro studies under the RESEARCH USE ONLY [RUO] licence. This product must not be used as for diagnostic or other medical purposes.
St John's Laboratory Ltd, Knowledge Dock Business Centre, University Way, London, E16 2RD | Tel: 0208 223 3081