

Anti-AIF1/IBA1-Isoform 1/3 antibody (C-Term) (STJ70928)

STJ70928

GENERAL INFORMATION

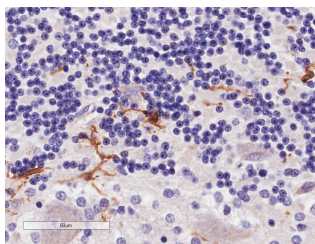
Product Type	Primary antibodies
Short Description	Goat polyclonal antibody anti-AIF1/IBA1-Isoform 1/3 (C-Term) is suitable for use in ELISA, Flow Cytometry, Immunofluorescence and Immunohistochemistry research applications.
Applications	Pep-ELISA/FC/IF/IHC
Host/Source	Goat
Reactivity	Human

PRODUCT PROPERTIES

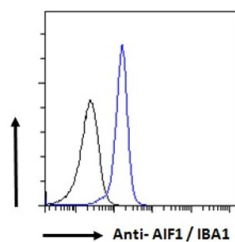
Clonality	Polyclonal
Clone ID	
Concentration	0.5 mg/mL
Conjugation	Unconjugated
Purification	Purified from goat serum by ammonium sulphate precipitation followed by antigen affinity chromatography using the immunizing peptide.
Dilution Range	Peptide ELISA: antibody detection limit dilution 1:16000. IHC: In paraffin embedded Human Cerebellum shows staining of astrocytes. Recommended concentration, 2-4µg/ml. FC: Flow cytometric analysis of K562 cells. Recommended concentration: 10µg
Formulation	0.5 mg/ml in Tris saline, 0.02% sodium azide, pH7.3 with 0.5% bovine serum albumin. NA
Isotype	IgG
Storage Instruction	Store at -20°C on receipt and minimise freeze-thaw cycles.

TARGET INFORMATION

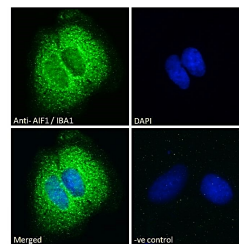
Gene ID	199
Gene Symbol	AIF1
Uniprot ID	AIF1_HUMAN
Immunogen	
Immunogen Region	C-Term
Specificity	This antibody is expected to recognise isoform 1 (NP_116573.1) and isoform 3 (NP_001614.3).
Immunogen Sequence	YEEKAREKEKP



STJ70928 (4µg/ml) staining of paraffin embedded Human Cerebellum. Microwaved antigen retrieval with Tris/EDTA buffer pH9, HRP-staining.



STJ70928 Flow cytometric analysis of paraformaldehyde fixed K562 cells (blue line), permeabilized with 0.5% Triton. Primary incubation 1hr (10µg/ml) followed by Alexa Fluor 488 secondary antibody (1µg/ml). NA NA NA IgG control: Unimmunized goat IgG (black line) followed by Alexa Fluor 488 secondary antibody.



STJ70928 Immunofluorescence analysis of paraformaldehyde fixed Caco-2 cells, permeabilized with 0.15% Triton. Primary incubation 1hr (10µg/ml) followed by Alexa Fluor 488 secondary antibody (2µg/ml) - showing cytoplasmic staining. The nuclear stain is DAPI (blue). NA NA NA Negative control: Unimmunized goat IgG (10µg/ml) followed by Alexa Fluor 488 secondary antibody (2µg/ml).

This product is suitable for in-vitro studies under the RESEARCH USE ONLY [RUO] licence. This product must not be used as for diagnostic or other medical purposes.

St John's Laboratory Ltd, Knowledge Dock Business Centre, University Way, London, E16 2RD | Tel: 0208 223 3081