

Anti-CYP17A1 antibody (Internal) (STJ70910)

STJ70910

GENERAL INFORMATION

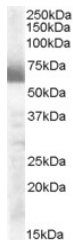
Product Type	Primary antibodies
Short Description	Goat polyclonal antibody anti-CYP17A1 (Internal) is suitable for use in ELISA, Western Blot and Immunohistochemistry research applications.
Applications	Pep-ELISA/WB/IHC
Host/Source	Goat
Reactivity	Human/Cat/Dog

PRODUCT PROPERTIES

Clonality	Polyclonal
Clone ID	
Concentration	0.5 mg/mL
Conjugation	Unconjugated
Purification	Purified from goat serum by ammonium sulphate precipitation followed by antigen affinity chromatography using the immunizing peptide.
Dilution Range	Peptide ELISA: antibody detection limit dilution 1:64000. WB: Approx 60kDa band observed in Human Ovary lysates (calculated MW of 57.4kDa according to NP_000093.1). Recommended concentration: 0.1-0.3µg/ml. Primary incubation was 1 hour. IHC:
Formulation	0.5 mg/ml in Tris saline, 0.02% sodium azide, pH7.3 with 0.5% bovine serum albumin. NA
Isotype	IgG
Storage	Store at -20°C on receipt and minimise freeze-thaw cycles.
Instruction	

TARGET INFORMATION

Gene ID	1586
Gene Symbol	CYP17A1
Uniprot ID	CP17A_HUMAN
Immunogen	
Immunogen Region	Internal
Specificity	
Immunogen Sequence	LFKDGDKLEK



STJ70910 (0.3µg/ml) staining of Human Ovary lysate (35µg protein in RIPA buffer). Detected by chemiluminescence.

This product is suitable for in-vitro studies under the RESEARCH USE ONLY [RUO] licence. This product must not be used as for diagnostic or other medical purposes.
St John's Laboratory Ltd, Knowledge Dock Business Centre, University Way, London, E16 2RD | Tel: 0208 223 3081