

Anti-CDX2 antibody (Internal) (STJ70896)

STJ70896

GENERAL INFORMATION

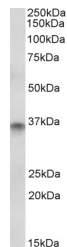
| | |
|--------------------------|--|
| Product Type | Primary antibodies |
| Short Description | Goat polyclonal antibody anti-CDX2 (Internal) is suitable for use in ELISA, Western Blot and Immunohistochemistry research applications. |
| Applications | Pep-ELISA/WB/IHC |
| Host/Source | Goat |
| Reactivity | Human/Mouse/Rat/Dog |

PRODUCT PROPERTIES

| | |
|-----------------------|--|
| Clonality | Polyclonal |
| Clone ID | |
| Concentration | 0.5 mg/mL |
| Conjugation | Unconjugated |
| Purification | Purified from goat serum by ammonium sulphate precipitation followed by antigen affinity chromatography using the immunizing peptide. |
| Dilution Range | Peptide ELISA: antibody detection limit dilution 1:4000. WB: Approx 35kDa band observed in Human Colon lysates (calculated MW of 33.5kDa according to NP_001256.1). Recommended concentration: 1-3µg/mL. Primary incubation was 1 hour. IHC: Paraf |
| Formulation | 0.5 mg/mL in Tris saline, 0.02% sodium azide, pH7.3 with 0.5% bovine serum albumin. NA |
| Isotype | IgG |
| Storage | Store at -20°C on receipt and minimise freeze-thaw cycles. |
| Instruction | |

TARGET INFORMATION

| | |
|---------------------------|--|
| Gene ID | 1045 |
| Gene Symbol | CDX2 |
| Uniprot ID | CDX2_HUMAN |
| Immunogen | |
| Immunogen Region | Internal |
| Specificity | No cross-reactivity expected with CDX1 and 4 |
| Immunogen Sequence | EQLSPGGQRRNLCE |



STJ70896 (1Åµg/mL) staining of Human Colon lysate (35Åµg protein in RIPA buffer). Detected by chemiluminescence.

This product is suitable for in-vitro studies under the RESEARCH USE ONLY [RUO] licence. This product must not be used as for diagnostic or other medical purposes.
St John's Laboratory Ltd, Knowledge Dock Business Centre, University Way, London, E16 2RD | Tel: 0208 223 3081